



SENTRON, Switch disconnecter 3LD, main switch, 3-pole, Iu: 16 A, Operating power / at AC-23 A at 400 V: 7.5 kW, floor mounting with door coupling, rotary operating mechanism, black, central mounting 22.5 mm of the handle

| Model   |                                   |
|---|-----------------------------------|
| product brand name  | SENTRON                           |
| product designation   | 3LD Switch disconnecter           |
| design of the product   | Main switch                       |
| display version / for switch position indicator manual operation                            | 1 ON - 0 OFF                      |
| type of switch  | Floor mounting with door coupling |
| design of the actuating element   | Short rotary knob                 |
| color / of the actuating element  | black                             |
| design of handle  | rotary operating mechanism, black |
| type of the driving mechanism / motor drive   | No                                |
| General technical data  |                                   |
| number of poles   | 3                                 |
| size of switch disconnecter   | 1                                 |
| mechanical service life (switching cycles) / typical  | 100 000                           |
| electrical endurance (switching cycles)   |                                   |
| • at AC-23 A / at 690 V   | 6 000                             |
| operating frequency / maximum   | 50 1/h                            |
| degree of pollution   | 3                                 |
| Voltage   |                                   |
| insulation voltage / rated value  | 690 V                             |
| surge voltage resistance / rated value  | 6 kV                              |
| operating voltage   |                                   |
| • at AC / rated value   | 690 V                             |
| operating frequency / rated value   |                                   |
| • minimum   | 50 Hz                             |
| • maximum   | 60 Hz                             |
| Protection class  |                                   |
| protection class IP   | IP65                              |
| degree of protection NEMA rating  | 1, 3R, 4X, 12                     |
| protection class IP / on the front  | IP65                              |
| Dissipation   |                                   |
| power loss [W] / for rated value of the current / at AC / in hot operating state / per pole | 0.5 W                             |
| Current   |                                   |
| operational current / rated value   | 16 A                              |
| operational current   |                                   |
| • at 40 °C / rated value  | 16 A                              |
| • at 45 °C / rated value  | 16 A                              |

|   |                        |
|---|------------------------|
| <ul style="list-style-type: none"> <li>• at 50 °C / rated value</li> </ul>  | 16 A                   |
| <ul style="list-style-type: none"> <li>• at 55 °C / rated value</li> </ul>  | 16 A                   |
| <ul style="list-style-type: none"> <li>• at AC / rated value</li> </ul>   | 16 A                   |
| <b>Main circuit</b>   |                        |
| operational current   |                        |
| <ul style="list-style-type: none"> <li>• at AC-21 / at 690 V / rated value</li> </ul>                                 | 16 A                   |
| <ul style="list-style-type: none"> <li>• at AC-21 A / at 240 V / rated value</li> </ul>                               | 16 A                   |
| <ul style="list-style-type: none"> <li>• at AC-21 A / at 400 V / rated value</li> </ul>                               | 16 A                   |
| <ul style="list-style-type: none"> <li>• at AC-21 A / at 440 V / rated value</li> </ul>                               | 16 A                   |
| <ul style="list-style-type: none"> <li>• at AC-23 A / at 400 V / rated value</li> </ul>                               | 16 A                   |
| operating power   |                        |
| <ul style="list-style-type: none"> <li>• at AC-23 A / at 240 V / rated value</li> </ul>                               | 4 kW                   |
| <ul style="list-style-type: none"> <li>• at AC-23 A / at 400 V / rated value</li> </ul>                               | 8 kW                   |
| <ul style="list-style-type: none"> <li>• at AC-23 A / at 440 V / rated value</li> </ul>                               | 7.5 kW                 |
| <ul style="list-style-type: none"> <li>• at AC-23 A / at 690 V / rated value</li> </ul>                               | 8 kW                   |
| <ul style="list-style-type: none"> <li>• at AC-3 / at 240 V / rated value</li> </ul>                                  | 3 kW                   |
| <ul style="list-style-type: none"> <li>• at AC-3 / at 400 V / rated value</li> </ul>                                  | 6 kW                   |
| <ul style="list-style-type: none"> <li>• at AC-3 / at 690 V / rated value</li> </ul>                                  | 5.5 kW                 |
| <b>Auxiliary circuit</b>  |                        |
| number of CO contacts / for auxiliary contacts  | 0                      |
| number of NC contacts / for auxiliary contacts  | 0                      |
| number of NO contacts / for auxiliary contacts  | 0                      |
| operating voltage / of auxiliary contacts / at AC / maximum   | 500 V                  |
| continuous current / of the auxiliary contact / rated value   | 10 A                   |
| insulation voltage / of the auxiliary switch / rated value  | 500 V                  |
| <b>Suitability</b>  |                        |
| suitability for use   |                        |
| <ul style="list-style-type: none"> <li>• main switch</li> </ul>   | Yes                    |
| <ul style="list-style-type: none"> <li>• switch disconnector</li> </ul>   | Yes                    |
| <ul style="list-style-type: none"> <li>• EMERGENCY OFF switch</li> </ul>  | No                     |
| <ul style="list-style-type: none"> <li>• safety switch</li> </ul>   | Yes                    |
| <ul style="list-style-type: none"> <li>• maintenance/repair switch</li> </ul>   | Yes                    |
| <b>Product details</b>  |                        |
| product feature / can be locked into OFF position   | Yes                    |
| <b>accessories</b>  |                        |
| product extension / optional  |                        |
| <ul style="list-style-type: none"> <li>• motor drive</li> </ul>   | No                     |
| <ul style="list-style-type: none"> <li>• voltage trigger</li> </ul>   | No                     |
| number of connectable NC contacts / for auxiliary contacts / attachable / maximum                                     | 3                      |
| number of connectable NO contacts / for auxiliary contacts / attachable / maximum                                     | 5                      |
| number of connectable CO contacts / for auxiliary contacts / attachable / maximum                                     | 0                      |
| number of bracket locks / maximum   | 3                      |
| hasp thickness / of the bracket locks   | 4 ... 8 mm             |
| <b>Short circuit</b>  |                        |
| conditional short-circuit current / with line-side fuse protection  |                        |
| <ul style="list-style-type: none"> <li>• at 690 V / by gG fuse / rated value</li> </ul>                               | 50 kA                  |
| let-through current / with closed switch  |                        |
| <ul style="list-style-type: none"> <li>• at 240 V / for combination switch + gG fuse / maximum</li> </ul>             | 3 kA                   |
| <ul style="list-style-type: none"> <li>• at 440 V / for combination switch + gG fuse / maximum</li> </ul>             | 3 kA                   |
| <ul style="list-style-type: none"> <li>• at 690 V / for combination switch + gG fuse / maximum permissible</li> </ul> | 3 kA                   |
| I <sub>2t</sub> value / with closed switch / at 240 V / for combination switch + gG fuse / maximum                    | 2.5 kA <sup>2</sup> .s |
| I <sub>2t</sub> value / with closed switch / at 440 V / for combination switch + gG fuse / maximum                    | 2.5 kA <sup>2</sup> .s |

|  |  |
|--|--|
| I2t value / with closed switch / at 690 V / for combination switch + gG fuse / maximum   | 3 kA2.s  |
| design of the fuse link <ul style="list-style-type: none"> <li>• for short-circuit protection of the main circuit / required</li> <li>• for short-circuit protection of the auxiliary switch / required</li> </ul> | <br>fuse gL/gG: 20 A<br>fuse gL/gG: 10 A   |
| operational current / of upstream fuse / rated value   | 20 A   |
| <b>according UL</b>  |  |
| operational current / at AC / according to UL 508/UL 60947-4-1 / rated value   | 16 A   |
| operating voltage / at AC / at 50/60 Hz / according to UL 508/UL 60947-4-1 / rated value   | 600 V  |
| active power [hp] / at AC / at 480 V / according to UL 508/UL 60947-4-1 / rated value  | 7.5  |
| active power [hp] / at AC / at 600 V / according to UL 508/UL 60947-4-1 / rated value  | 10   |
| short-time withstand current (SCCR) / at 600 V / according to UL 508/UL 60947-4-1  | 5 kA   |
| continuous current / of upstream fuse / according to UL / rated value  | 50 A   |
| type of fuse / according to UL   | RK5  |
| <b>Connections</b>   |  |
| AWG number / as coded connectable conductor cross section / solid <ul style="list-style-type: none"> <li>• maximum</li> <li>• minimum</li> </ul>   | <br>10<br>18   |
| type of connectable conductor cross-sections / for copper conductor <ul style="list-style-type: none"> <li>• solid</li> <li>• finely stranded / with core end processing</li> <li>• stranded</li> </ul>            | <br>1x (1...6mm <sup>2</sup> )<br>1x (1...4mm <sup>2</sup> )<br>1x (1..6mm <sup>2</sup> )  |
| type of connectable conductor cross-sections / for auxiliary contacts <ul style="list-style-type: none"> <li>• solid</li> <li>• finely stranded / with core end processing</li> <li>• stranded</li> </ul>          | <br>lateral auxiliary switch 2x (0,75 ... 2,5mm <sup>2</sup> ), 1x 4mm <sup>2</sup> ; front auxiliary switch 1x (0,75 ... 2,5mm <sup>2</sup> )<br>lateral auxiliary switch 2x (0,75 ... 1,5mm <sup>2</sup> ), 1x 2,5mm <sup>2</sup> ; front auxiliary switch 1x 2,5mm <sup>2</sup><br>lateral auxiliary switch 2x (0,75 ... 2,5mm <sup>2</sup> ), 1x 4mm <sup>2</sup> ; front auxiliary switch 1x (0,75 ... 2,5mm <sup>2</sup> ) |
| type of electrical connection <ul style="list-style-type: none"> <li>• for main current circuit</li> <li>• for auxiliary contacts</li> </ul>   | <br>box terminal<br>connection terminals   |
| <b>Mechanical Design</b>   |  |
| height   | 84 mm  |
| width  | 67 mm  |
| depth  | 451.5 mm   |
| type of device   | fixed mounting   |
| fastening method   | Built-in unit fixed-mounted version  |
| fastening method <ul style="list-style-type: none"> <li>• 4-hole front mounting</li> <li>• front mounting with central attachment</li> <li>• rail mounting</li> </ul>  | <br>No<br>Yes<br>Yes   |
| net weight   | 420 g  |
| <b>Environmental conditions</b>  |  |
| ambient temperature / during operation <ul style="list-style-type: none"> <li>• minimum</li> <li>• maximum</li> </ul>  | <br>-25 °C<br>55 °C  |
| ambient temperature / during storage <ul style="list-style-type: none"> <li>• minimum</li> <li>• maximum</li> </ul>  | <br>-25 °C<br>55 °C  |
| <b>General Product Approval</b>  |  |



[Confirmation](#)



[Miscellaneous](#)

|                          |                           |                   |                   |
|--------------------------|---------------------------|-------------------|-------------------|
| General Product Approval | Declaration of Conformity | Test Certificates | Marine / Shipping |
|--------------------------|---------------------------|-------------------|-------------------|



EG-Konf.



[Special Test Certificate](#)



URS



DNV-GL

other

[Environmental Confirmations](#)

[Miscellaneous](#)

Further information

Information- and Downloadcenter (Catalogs, Brochures,...)

<http://www.siemens.com/lowvoltage/catalogs>

Industry Mall (Online ordering system)

<https://mall.industry.siemens.com/mall/en/en/Catalog/product?mlfb=3LD2044-0TK51>

Service&Support (Manuals, Certificates, Characteristics, FAQs,...)

<https://support.industry.siemens.com/cs/ww/en/ps/3LD2044-0TK51>

Image database (product images, 2D dimension drawings, 3D models, device circuit diagrams, ...)

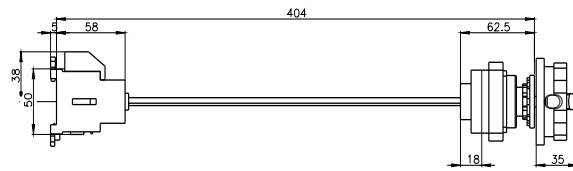
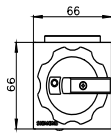
[http://www.automation.siemens.com/bilddb/cax\\_en.aspx?mlfb=3LD2044-0TK51](http://www.automation.siemens.com/bilddb/cax_en.aspx?mlfb=3LD2044-0TK51)

CAX-Online-Generator

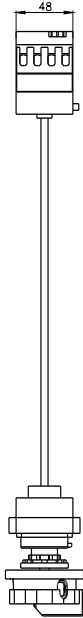
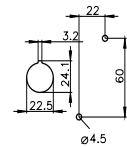
<http://www.siemens.com/cax>

Tender specifications

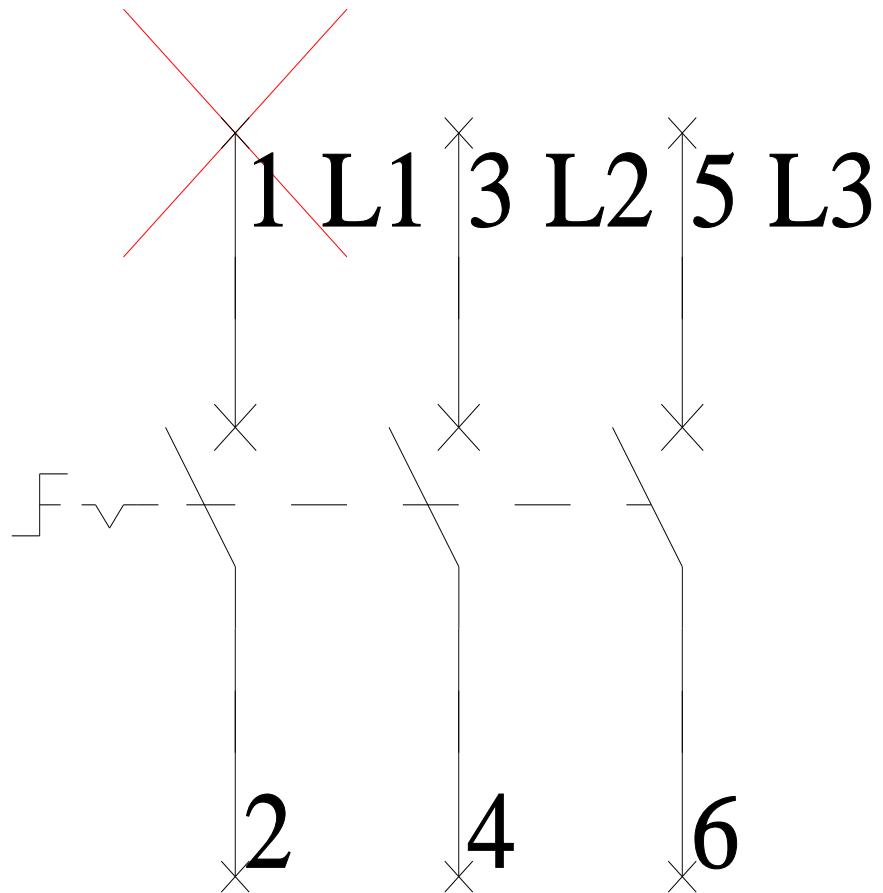
<http://www.siemens.com/specifications>



Tuer/ Bode/ P/Bctee/ Plancher/  
Puerto/ Bctee/ Pctee/ Fundo



**-Q1**



**-CI**

