



SENTRON, Switch disconnecter 3LD, emergency switching-off switch, 4-pole, Iu: 16 A, operating power / at AC-23 A 400 V: 7.5 kW, front-mounted, 1 NC, 1 NO, rotary operating mechanism, Red / yellow, Central mounting 22.5 mm of the handle

| Model   |  |
|---|--|
| product brand name  | SENTRON                                |
| product designation   | 3LD Switch disconnecter                |
| design of the product   | EMERGENCY-STOP switch                  |
| display version / for switch position indicator manual operation                            | 1 ON - 0 OFF                           |
| type of switch  | front mounted                          |
| design of the actuating element   | Short rotary knob                      |
| color / of the actuating element  | red                                    |
| design of handle  | rotary operating mechanism, red/yellow |
| type of the driving mechanism / motor drive   | No                                     |
| General technical data  |  |
| number of poles   | 4                                      |
| size of switch disconnecter   | 1                                      |
| mechanical service life (switching cycles) / typical  | 100 000                                |
| electrical endurance (switching cycles)   |  |
| • at AC-23 A / at 690 V   | 6 000                                  |
| operating frequency / maximum   | 50 1/h                                 |
| degree of pollution   | 3                                      |
| Voltage   |  |
| insulation voltage / rated value  | 690 V                                  |
| surge voltage resistance / rated value  | 6 kV                                   |
| operating voltage   |  |
| • at AC / rated value   | 690 V                                  |
| operating frequency / rated value   |  |
| • minimum   | 50 Hz                                  |
| • maximum   | 60 Hz                                  |
| Protection class  |  |
| protection class IP   | IP65                                   |
| degree of protection NEMA rating  | 1, 3R, 4X, 12                          |
| protection class IP / on the front  | IP65                                   |
| Dissipation   |  |
| power loss [W] / for rated value of the current / at AC / in hot operating state / per pole | 0.5 W                                  |
| Current   |  |
| operational current / rated value   | 16 A                                   |
| operational current   |  |
| • at 40 °C / rated value  | 16 A                                   |
| • at 45 °C / rated value  | 16 A                                   |

|   |                        |
|---|------------------------|
| <ul style="list-style-type: none"> <li>• at 50 °C / rated value</li> </ul>  | 16 A                   |
| <ul style="list-style-type: none"> <li>• at 55 °C / rated value</li> </ul>  | 16 A                   |
| <ul style="list-style-type: none"> <li>• at AC / rated value</li> </ul>   | 16 A                   |
| <b>Main circuit</b>   |                        |
| operational current   |                        |
| <ul style="list-style-type: none"> <li>• at AC-21 / at 690 V / rated value</li> </ul>                                 | 16 A                   |
| <ul style="list-style-type: none"> <li>• at AC-21 A / at 240 V / rated value</li> </ul>                               | 16 A                   |
| <ul style="list-style-type: none"> <li>• at AC-21 A / at 400 V / rated value</li> </ul>                               | 16 A                   |
| <ul style="list-style-type: none"> <li>• at AC-21 A / at 440 V / rated value</li> </ul>                               | 16 A                   |
| <ul style="list-style-type: none"> <li>• at AC-23 A / at 400 V / rated value</li> </ul>                               | 16 A                   |
| operating power   |                        |
| <ul style="list-style-type: none"> <li>• at AC-23 A / at 240 V / rated value</li> </ul>                               | 4 kW                   |
| <ul style="list-style-type: none"> <li>• at AC-23 A / at 400 V / rated value</li> </ul>                               | 8 kW                   |
| <ul style="list-style-type: none"> <li>• at AC-23 A / at 440 V / rated value</li> </ul>                               | 7.5 kW                 |
| <ul style="list-style-type: none"> <li>• at AC-23 A / at 690 V / rated value</li> </ul>                               | 8 kW                   |
| <ul style="list-style-type: none"> <li>• at AC-3 / at 240 V / rated value</li> </ul>                                  | 3 kW                   |
| <ul style="list-style-type: none"> <li>• at AC-3 / at 400 V / rated value</li> </ul>                                  | 6 kW                   |
| <ul style="list-style-type: none"> <li>• at AC-3 / at 690 V / rated value</li> </ul>                                  | 5.5 kW                 |
| <b>Auxiliary circuit</b>  |                        |
| number of CO contacts / for auxiliary contacts  | 0                      |
| number of NC contacts / for auxiliary contacts  | 1                      |
| number of NO contacts / for auxiliary contacts  | 1                      |
| operating voltage / of auxiliary contacts / at AC / maximum   | 500 V                  |
| continuous current / of the auxiliary contact / rated value   | 10 A                   |
| insulation voltage / of the auxiliary switch / rated value  | 500 V                  |
| <b>Suitability</b>  |                        |
| suitability for use   |                        |
| <ul style="list-style-type: none"> <li>• main switch</li> </ul>   | Yes                    |
| <ul style="list-style-type: none"> <li>• switch disconnecter</li> </ul>   | Yes                    |
| <ul style="list-style-type: none"> <li>• EMERGENCY OFF switch</li> </ul>  | Yes                    |
| <ul style="list-style-type: none"> <li>• safety switch</li> </ul>   | Yes                    |
| <ul style="list-style-type: none"> <li>• maintenance/repair switch</li> </ul>   | Yes                    |
| <b>Product details</b>  |                        |
| product feature / can be locked into OFF position   | Yes                    |
| <b>accessories</b>  |                        |
| product extension / optional  |                        |
| <ul style="list-style-type: none"> <li>• motor drive</li> </ul>   | No                     |
| <ul style="list-style-type: none"> <li>• voltage trigger</li> </ul>   | No                     |
| number of connectable NC contacts / for auxiliary contacts / attachable / maximum                                     | 0                      |
| number of connectable NO contacts / for auxiliary contacts / attachable / maximum                                     | 0                      |
| number of connectable CO contacts / for auxiliary contacts / attachable / maximum                                     | 0                      |
| number of bracket locks / maximum   | 3                      |
| hasp thickness / of the bracket locks   | 4 ... 8 mm             |
| <b>Short circuit</b>  |                        |
| conditional short-circuit current / with line-side fuse protection  |                        |
| <ul style="list-style-type: none"> <li>• at 690 V / by gG fuse / rated value</li> </ul>                               | 50 kA                  |
| let-through current / with closed switch  |                        |
| <ul style="list-style-type: none"> <li>• at 240 V / for combination switch + gG fuse / maximum</li> </ul>             | 3 kA                   |
| <ul style="list-style-type: none"> <li>• at 440 V / for combination switch + gG fuse / maximum</li> </ul>             | 3 kA                   |
| <ul style="list-style-type: none"> <li>• at 690 V / for combination switch + gG fuse / maximum permissible</li> </ul> | 3 kA                   |
| I <sub>2t</sub> value / with closed switch / at 240 V / for combination switch + gG fuse / maximum                    | 2.5 kA <sup>2</sup> .s |
| I <sub>2t</sub> value / with closed switch / at 440 V / for combination switch + gG fuse / maximum                    | 2.5 kA <sup>2</sup> .s |

|   |  |
|---|--|
| I2t value / with closed switch / at 690 V / for combination switch + gG fuse / maximum                              | 3 kA <sup>2</sup> .s                                       |
| design of the fuse link   |  |
| <ul style="list-style-type: none"> <li>• for short-circuit protection of the main circuit / required</li> </ul>     | fuse gL/gG: 20 A   |
| <ul style="list-style-type: none"> <li>• for short-circuit protection of the auxiliary switch / required</li> </ul> | fuse gL/gG: 10 A   |
| operational current / of upstream fuse / rated value  | 20 A   |
| <b>according UL</b>   |  |
| operational current / at AC / according to UL 508/UL 60947-4-1 / rated value  | 16 A   |
| operating voltage / at AC / at 50/60 Hz / according to UL 508/UL 60947-4-1 / rated value                            | 600 V  |
| active power [hp] / at AC / at 480 V / according to UL 508/UL 60947-4-1 / rated value                               | 7.5  |
| active power [hp] / at AC / at 600 V / according to UL 508/UL 60947-4-1 / rated value                               | 10   |
| short-time withstand current (SCCR) / at 600 V / according to UL 508/UL 60947-4-1                                   | 5 kA   |
| continuous current / of upstream fuse / according to UL / rated value   | 50 A   |
| type of fuse / according to UL  | RK5  |
| <b>Connections</b>  |  |
| AWG number / as coded connectable conductor cross section / solid   |  |
| <ul style="list-style-type: none"> <li>• maximum</li> </ul>   | 10   |
| <ul style="list-style-type: none"> <li>• minimum</li> </ul>   | 18   |
| type of connectable conductor cross-sections / for copper conductor   |  |
| <ul style="list-style-type: none"> <li>• solid</li> </ul>   | 1x (1...6mm <sup>2</sup> )                                 |
| <ul style="list-style-type: none"> <li>• finely stranded / with core end processing</li> </ul>                      | 1x (1...4mm <sup>2</sup> )                                 |
| <ul style="list-style-type: none"> <li>• stranded</li> </ul>  | 1x (1..6mm <sup>2</sup> )                                  |
| type of connectable conductor cross-sections / for auxiliary contacts   |  |
| <ul style="list-style-type: none"> <li>• solid</li> </ul>   | 2x (0.75 ... 2.5 mm <sup>2</sup> ), 1x 4 mm <sup>2</sup>   |
| <ul style="list-style-type: none"> <li>• finely stranded / with core end processing</li> </ul>                      | 2x (0.75 ... 1.5 mm <sup>2</sup> ), 1x 2.5 mm <sup>2</sup> |
| <ul style="list-style-type: none"> <li>• stranded</li> </ul>  | 2x (0.75 ... 2.5 mm <sup>2</sup> ), 1x 4 mm <sup>2</sup>   |
| type of electrical connection   |  |
| <ul style="list-style-type: none"> <li>• for main current circuit</li> </ul>  | box terminal   |
| <ul style="list-style-type: none"> <li>• for auxiliary contacts</li> </ul>  | connection terminals                                       |
| <b>Mechanical Design</b>  |  |
| height  | 84 mm  |
| width   | 67 mm  |
| depth   | 116.5 mm   |
| type of device  | fixed mounting   |
| fastening method  | Built-in unit fixed-mounted version                        |
| fastening method  |  |
| <ul style="list-style-type: none"> <li>• 4-hole front mounting</li> </ul>   | No   |
| <ul style="list-style-type: none"> <li>• front mounting with central attachment</li> </ul>                          | Yes  |
| <ul style="list-style-type: none"> <li>• rail mounting</li> </ul>   | No   |
| net weight  | 233 g  |
| <b>Environmental conditions</b>   |  |
| ambient temperature / during operation  |  |
| <ul style="list-style-type: none"> <li>• minimum</li> </ul>   | -25 °C   |
| <ul style="list-style-type: none"> <li>• maximum</li> </ul>   | 55 °C  |
| ambient temperature / during storage  |  |
| <ul style="list-style-type: none"> <li>• minimum</li> </ul>   | -25 °C   |
| <ul style="list-style-type: none"> <li>• maximum</li> </ul>   | 55 °C  |
| <b>General Product Approval</b>   |  |



[Confirmation](#)



[Miscellaneous](#)

|                          |                           |                   |                   |
|--------------------------|---------------------------|-------------------|-------------------|
| General Product Approval | Declaration of Conformity | Test Certificates | Marine / Shipping |
|--------------------------|---------------------------|-------------------|-------------------|



EG-Konf.

[Special Test Certificate](#)



URS



other

[Environmental Confirmations](#)

[Miscellaneous](#)

Further information

Information- and Downloadcenter (Catalogs, Brochures,...)

<http://www.siemens.com/lowvoltage/catalogs>

Industry Mall (Online ordering system)

<https://mall.industry.siemens.com/mall/en/en/Catalog/product?mlfb=3LD2054-2EP53>

Service&Support (Manuals, Certificates, Characteristics, FAQs,...)

<https://support.industry.siemens.com/cs/ww/en/ps/3LD2054-2EP53>

Image database (product images, 2D dimension drawings, 3D models, device circuit diagrams, ...)

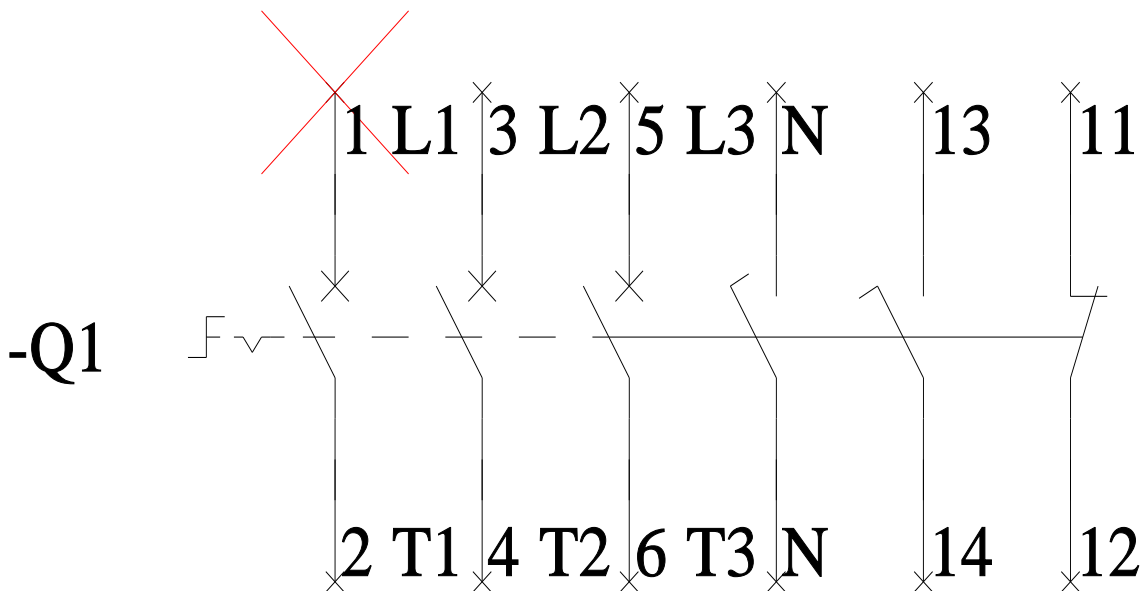
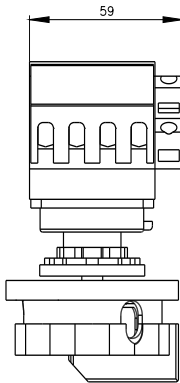
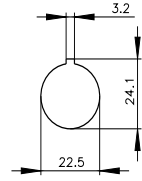
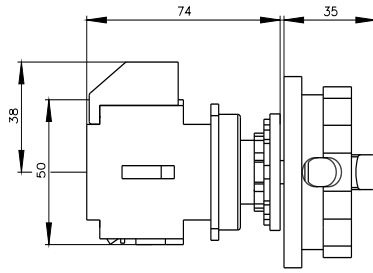
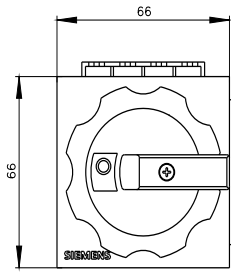
[http://www.automation.siemens.com/bilddb/cax\\_en.aspx?mlfb=3LD2054-2EP53](http://www.automation.siemens.com/bilddb/cax_en.aspx?mlfb=3LD2054-2EP53)

CAX-Online-Generator

<http://www.siemens.com/cax>

Tender specifications

<http://www.siemens.com/specifications>



-CI

