



SETRON, Switch disconnecter 3LD, emergency switching-off switch, 4-pole, Iu: 32 A, operating power / at AC-23 A 400 V: 11.5 kW, front-mounted, rotary operating mechanism, Red / yellow, 4-hole mounting of the handle

Model	
product brand name	SETRON
product designation	3LD Switch disconnecter
design of the product	EMERGENCY-STOP switch
display version / for switch position indicator manual operation	1 ON - 0 OFF
type of switch	front mounted
design of the actuating element	Short rotary knob
color / of the actuating element	red
design of handle	rotary operating mechanism, red/yellow
type of the driving mechanism / motor drive	No
General technical data	
number of poles	4
size of switch disconnecter	2
mechanical service life (switching cycles) / typical	100 000
electrical endurance (switching cycles)	
• at AC-23 A / at 690 V	6 000
operating frequency / maximum	50 1/h
degree of pollution	3
Voltage	
insulation voltage / rated value	690 V
surge voltage resistance / rated value	6 kV
operating voltage	
• at AC / rated value	690 V
operating frequency / rated value	
• minimum	50 Hz
• maximum	60 Hz
Protection class	
protection class IP	IP65
degree of protection NEMA rating	1, 3R, 4X, 12
protection class IP / on the front	IP65
Dissipation	
power loss [W] / for rated value of the current / at AC / in hot operating state / per pole	1.8 W
Current	
operational current / rated value	32 A
operational current	
• at 40 °C / rated value	32 A
• at 45 °C / rated value	32 A

<ul style="list-style-type: none"> • at 50 °C / rated value 	32 A
<ul style="list-style-type: none"> • at 55 °C / rated value 	32 A
<ul style="list-style-type: none"> • at AC / rated value 	32 A
Main circuit	
operational current	
<ul style="list-style-type: none"> • at AC-21 / at 690 V / rated value 	32 A
<ul style="list-style-type: none"> • at AC-21 A / at 240 V / rated value 	32 A
<ul style="list-style-type: none"> • at AC-21 A / at 400 V / rated value 	32 A
<ul style="list-style-type: none"> • at AC-21 A / at 440 V / rated value 	32 A
<ul style="list-style-type: none"> • at AC-23 A / at 400 V / rated value 	22 A
operating power	
<ul style="list-style-type: none"> • at AC-23 A / at 240 V / rated value 	6 kW
<ul style="list-style-type: none"> • at AC-23 A / at 400 V / rated value 	12 kW
<ul style="list-style-type: none"> • at AC-23 A / at 440 V / rated value 	11.5 kW
<ul style="list-style-type: none"> • at AC-23 A / at 690 V / rated value 	12 kW
<ul style="list-style-type: none"> • at AC-3 / at 240 V / rated value 	5.5 kW
<ul style="list-style-type: none"> • at AC-3 / at 400 V / rated value 	10 kW
<ul style="list-style-type: none"> • at AC-3 / at 690 V / rated value 	9.5 kW
Auxiliary circuit	
number of CO contacts / for auxiliary contacts	0
number of NC contacts / for auxiliary contacts	0
number of NO contacts / for auxiliary contacts	0
operating voltage / of auxiliary contacts / at AC / maximum	500 V
continuous current / of the auxiliary contact / rated value	10 A
insulation voltage / of the auxiliary switch / rated value	500 V
Suitability	
suitability for use	
<ul style="list-style-type: none"> • main switch 	Yes
<ul style="list-style-type: none"> • switch disconnecter 	Yes
<ul style="list-style-type: none"> • EMERGENCY OFF switch 	Yes
<ul style="list-style-type: none"> • safety switch 	Yes
<ul style="list-style-type: none"> • maintenance/repair switch 	Yes
Product details	
product feature / can be locked into OFF position	Yes
accessories	
product extension / optional	
<ul style="list-style-type: none"> • motor drive 	No
<ul style="list-style-type: none"> • voltage trigger 	No
number of connectable NC contacts / for auxiliary contacts / attachable / maximum	2
number of connectable NO contacts / for auxiliary contacts / attachable / maximum	2
number of connectable CO contacts / for auxiliary contacts / attachable / maximum	0
number of bracket locks / maximum	3
hasp thickness / of the bracket locks	4 ... 8 mm
Short circuit	
conditional short-circuit current / with line-side fuse protection	
<ul style="list-style-type: none"> • at 690 V / by gG fuse / rated value 	50 kA
let-through current / with closed switch	
<ul style="list-style-type: none"> • at 240 V / for combination switch + gG fuse / maximum 	4.5 kA
<ul style="list-style-type: none"> • at 440 V / for combination switch + gG fuse / maximum 	4.5 kA
<ul style="list-style-type: none"> • at 690 V / for combination switch + gG fuse / maximum permissible 	5 kA
I _{2t} value / with closed switch / at 240 V / for combination switch + gG fuse / maximum	9 kA ² .s
I _{2t} value / with closed switch / at 440 V / for combination switch + gG fuse / maximum	9 kA ² .s

I2t value / with closed switch / at 690 V / for combination switch + gG fuse / maximum	9 kA2.s
design of the fuse link <ul style="list-style-type: none"> • for short-circuit protection of the main circuit / required • for short-circuit protection of the auxiliary switch / required 	<p>fuse gL/gG: 40 A</p> <p>fuse gL/gG: 10 A</p>
operational current / of upstream fuse / rated value	40 A
according UL	
operational current / at AC / according to UL 508/UL 60947-4-1 / rated value	32 A
operating voltage / at AC / at 50/60 Hz / according to UL 508/UL 60947-4-1 / rated value	600 V
active power [hp] / at AC / at 480 V / according to UL 508/UL 60947-4-1 / rated value	20
active power [hp] / at AC / at 600 V / according to UL 508/UL 60947-4-1 / rated value	20
short-time withstand current (SCCR) / at 600 V / according to UL 508/UL 60947-4-1	5 kA
continuous current / of upstream fuse / according to UL / rated value	80 A
type of fuse / according to UL	RK5
Connections	
AWG number / as coded connectable conductor cross section / solid <ul style="list-style-type: none"> • maximum • minimum 	<p>8</p> <p>14</p>
type of connectable conductor cross-sections / for copper conductor <ul style="list-style-type: none"> • solid • finely stranded / with core end processing • stranded 	<p>1x (1,5...16mm²)</p> <p>1x (1,5...10mm²)</p> <p>1x (1,5...16mm²)</p>
type of connectable conductor cross-sections / for auxiliary contacts <ul style="list-style-type: none"> • solid • finely stranded / with core end processing • stranded 	<p>lateral auxiliary switch 2x (0,75 ... 2,5mm²), 1x 4mm²; front auxiliary switch 1x (0,75 ... 2,5mm²)</p> <p>lateral auxiliary switch 2x (0,75 ... 1,5mm²), 1x 2,5mm²; front auxiliary switch 1x 2,5mm²</p> <p>lateral auxiliary switch 2x (0,75 ... 2,5mm²), 1x 4mm²; front auxiliary switch 1x (0,75 ... 2,5mm²)</p>
type of electrical connection <ul style="list-style-type: none"> • for main current circuit • for auxiliary contacts 	<p>box terminal</p> <p>connection terminals</p>
Mechanical Design	
height	83 mm
width	67 mm
depth	92.5 mm
type of device	fixed mounting
fastening method	Built-in unit fixed-mounted version
fastening method <ul style="list-style-type: none"> • 4-hole front mounting • front mounting with central attachment • rail mounting 	<p>Yes</p> <p>No</p> <p>No</p>
net weight	236 g
Environmental conditions	
ambient temperature / during operation <ul style="list-style-type: none"> • minimum • maximum 	<p>-25 °C</p> <p>55 °C</p>
ambient temperature / during storage <ul style="list-style-type: none"> • minimum • maximum 	<p>-25 °C</p> <p>55 °C</p>
General Product Approval	



[Confirmation](#)



[Miscellaneous](#)

General Product Approval	Declaration of Conformity	Test Certificates	Marine / Shipping
--------------------------	---------------------------	-------------------	-------------------



EG-Konf.



[Special Test Certificate](#)



URS



PRS

Marine / Shipping	other
-------------------	-------



[Environmental Confirmations](#)

[Miscellaneous](#)

Further information

Information- and Downloadcenter (Catalogs, Brochures,...)

<http://www.siemens.com/lowvoltage/catalogs>

Industry Mall (Online ordering system)

<https://mall.industry.siemens.com/mall/en/en/Catalog/product?mlfb=3LD2203-1TL53>

Service&Support (Manuals, Certificates, Characteristics, FAQs,...)

<https://support.industry.siemens.com/cs/ww/en/ps/3LD2203-1TL53>

Image database (product images, 2D dimension drawings, 3D models, device circuit diagrams, ...)

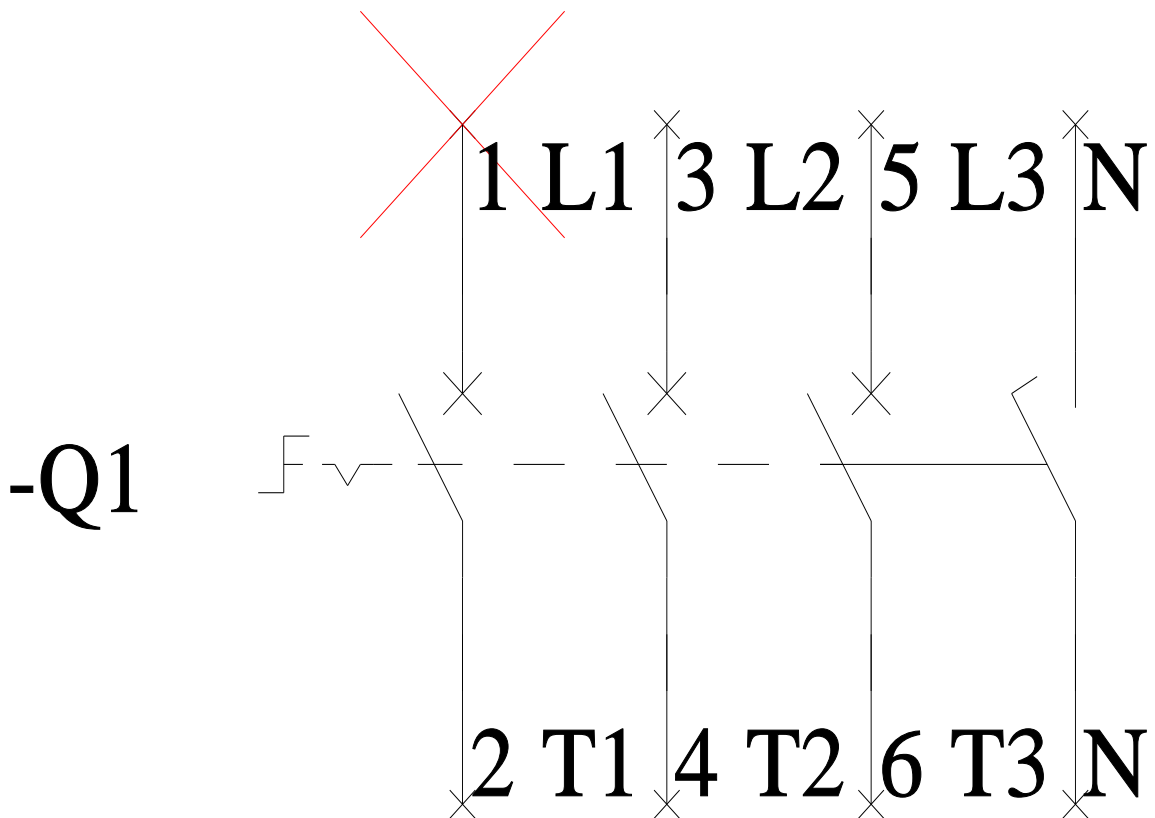
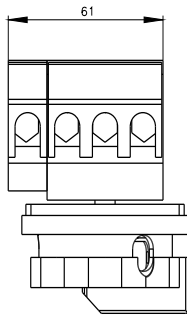
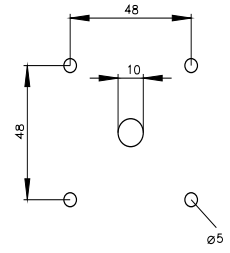
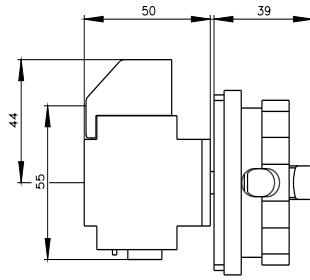
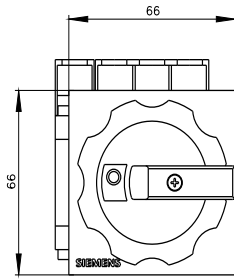
http://www.automation.siemens.com/bilddb/cax_en.aspx?mlfb=3LD2203-1TL53

CAX-Online-Generator

<http://www.siemens.com/cax>

Tender specifications

<http://www.siemens.com/specifications>



-CI

