



SENTRON, Switch disconnecter 3LD, main switch, 4-pole, Iu: 63 A, Operating power / at AC-23 A at 400 V: 22 kW, front-mounted, 1 NC, 1 NO, rotary operating mechanism, black, 4-hole mounting of the handle

Model	
product brand name	SENTRON
product designation	3LD Switch disconnecter
design of the product	Main switch
display version / for switch position indicator manual operation	1 ON - 0 OFF
type of switch	front mounted
design of the actuating element	Short rotary knob
color / of the actuating element	black
design of handle	rotary operating mechanism, black
type of the driving mechanism / motor drive	No
General technical data	
number of poles	4
number of poles / note	PE
size of switch disconnecter	3
mechanical service life (switching cycles) / typical electrical endurance (switching cycles)	100 000
• at AC-23 A / at 690 V	6 000
operating frequency / maximum	50 1/h
degree of pollution	3
Voltage	
insulation voltage / rated value	690 V
surge voltage resistance / rated value	6 kV
operating voltage	
• at AC / rated value	690 V
operating frequency / rated value	
• minimum	50 Hz
• maximum	60 Hz
Protection class	
protection class IP	IP65
degree of protection NEMA rating	1, 3R, 4X, 12
protection class IP / on the front	IP65
Dissipation	
power loss [W] / for rated value of the current / at AC / in hot operating state / per pole	4.5 W
Current	
operational current / rated value	63 A
operational current	
• at 40 °C / rated value	63 A

● at 45 °C / rated value	63 A
● at 50 °C / rated value	63 A
● at 55 °C / rated value	63 A
● at AC / rated value	63 A

Main circuit

operational current	
● at AC-21 / at 690 V / rated value	63 A
● at AC-21 A / at 240 V / rated value	63 A
● at AC-21 A / at 400 V / rated value	63 A
● at AC-21 A / at 440 V / rated value	63 A
● at AC-23 A / at 400 V / rated value	43 A

operating power	
● at AC-23 A / at 240 V / rated value	11 kW
● at AC-23 A / at 400 V / rated value	22 kW
● at AC-23 A / at 440 V / rated value	22 kW
● at AC-23 A / at 690 V / rated value	19 kW
● at AC-3 / at 240 V / rated value	11 kW
● at AC-3 / at 400 V / rated value	19 kW
● at AC-3 / at 690 V / rated value	15 kW

Auxiliary circuit

number of CO contacts / for auxiliary contacts	0
number of NC contacts / for auxiliary contacts	1
number of NO contacts / for auxiliary contacts	1
operating voltage / of auxiliary contacts / at AC / maximum	500 V
continuous current / of the auxiliary contact / rated value	10 A
insulation voltage / of the auxiliary switch / rated value	500 V

Suitability

suitability for use	
● main switch	Yes
● switch disconnector	Yes
● EMERGENCY OFF switch	No
● safety switch	Yes
● maintenance/repair switch	Yes

Product details

product feature / can be locked into OFF position	Yes
---	-----

accessories

product extension / optional	
● motor drive	No
● voltage trigger	No
number of connectable NC contacts / for auxiliary contacts / attachable / maximum	2
number of connectable NO contacts / for auxiliary contacts / attachable / maximum	2
number of connectable CO contacts / for auxiliary contacts / attachable / maximum	0
number of bracket locks / maximum	3
hasp thickness / of the bracket locks	4 ... 8 mm

Short circuit

conditional short-circuit current / with line-side fuse protection	
● at 690 V / by gG fuse / rated value	50 kA
let-through current / with closed switch	
● at 240 V / for combination switch + gG fuse / maximum	6 kA
● at 440 V / for combination switch + gG fuse / maximum	6 kA
● at 690 V / for combination switch + gG fuse / maximum permissible	6 kA
I ² t value / with closed switch	
● at 240 V / for combination switch + gG fuse / maximum	21 kA ² .s

<ul style="list-style-type: none"> at 440 V / for combination switch + gG fuse / maximum 	21 kA2.s
<ul style="list-style-type: none"> at 690 V / for combination switch + gG fuse / maximum 	21 kA2.s
design of the fuse link	
<ul style="list-style-type: none"> for short-circuit protection of the main circuit / required 	fuse gL/gG: 63 A
<ul style="list-style-type: none"> for short-circuit protection of the auxiliary switch / required 	fuse gL/gG: 10 A
operational current / of upstream fuse / rated value	63 A
according UL	
operational current / at AC / according to UL 508/UL 60947-4-1 / rated value	63 A
operating voltage / at AC / at 50/60 Hz / according to UL 508/UL 60947-4-1 / rated value	600 V
active power [hp] / at AC / at 480 V / according to UL 508/UL 60947-4-1 / rated value	40
active power [hp] / at AC / at 600 V / according to UL 508/UL 60947-4-1 / rated value	50
short-time withstand current (SCCR) / at 600 V / according to UL 508/UL 60947-4-1	5 kA
continuous current / of upstream fuse / according to UL / rated value	175 A
type of fuse / according to UL	RK5
Connections	
AWG number / as coded connectable conductor cross section / solid	
<ul style="list-style-type: none"> maximum 	6
<ul style="list-style-type: none"> minimum 	14
type of connectable conductor cross-sections / for copper conductor	
<ul style="list-style-type: none"> solid 	1x (2,5...35mm ²)
<ul style="list-style-type: none"> finely stranded / with core end processing 	1x (2.5...16 mm ²)
<ul style="list-style-type: none"> stranded 	1x (2,5..35mm ²)
type of connectable conductor cross-sections / for auxiliary contacts	
<ul style="list-style-type: none"> solid 	lateral auxiliary switch 2x (0,75 ... 2,5mm ²), 1x 4mm ² ; front auxiliary switch 1x (0,75 ... 2,5mm ²)
<ul style="list-style-type: none"> finely stranded / with core end processing 	lateral auxiliary switch 2x (0,75 ... 1,5mm ²), 1x 2,5mm ² ; front auxiliary switch 1x 2,5mm ²
<ul style="list-style-type: none"> stranded 	lateral auxiliary switch 2x (0,75 ... 2,5mm ²), 1x 4mm ² ; front auxiliary switch 1x (0,75 ... 2,5mm ²)
type of electrical connection	
<ul style="list-style-type: none"> for main current circuit 	box terminal
<ul style="list-style-type: none"> for auxiliary contacts 	connection terminals
Mechanical Design	
height	106 mm
width	90 mm
depth	110.5 mm
type of device	fixed mounting
fastening method	Built-in unit fixed-mounted version
fastening method	
<ul style="list-style-type: none"> 4-hole front mounting 	Yes
<ul style="list-style-type: none"> front mounting with central attachment 	No
<ul style="list-style-type: none"> rail mounting 	No
net weight	405 g
Environmental conditions	
ambient temperature / during operation	
<ul style="list-style-type: none"> minimum 	-25 °C
<ul style="list-style-type: none"> maximum 	55 °C
ambient temperature / during storage	
<ul style="list-style-type: none"> minimum 	-25 °C
<ul style="list-style-type: none"> maximum 	55 °C

[Confirmation](#)



Test Certificates

other

[Special Test Certificate](#)

[Miscellaneous](#)

[Environmental Confirmations](#)

Further information

Information- and Downloadcenter (Catalogs, Brochures,...)

<http://www.siemens.com/lowvoltage/catalogs>

Industry Mall (Online ordering system)

<https://mall.industry.siemens.com/mall/en/en/Catalog/product?mlfb=3LD2504-1TD51>

Service&Support (Manuals, Certificates, Characteristics, FAQs,...)

<https://support.industry.siemens.com/cs/ww/en/ps/3LD2504-1TD51>

Image database (product images, 2D dimension drawings, 3D models, device circuit diagrams, ...)

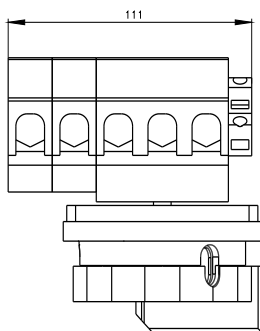
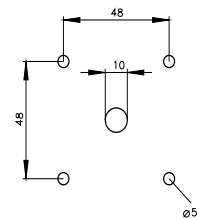
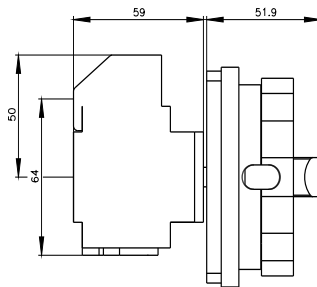
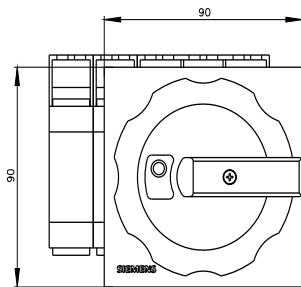
http://www.automation.siemens.com/bilddb/cax_en.aspx?mlfb=3LD2504-1TD51

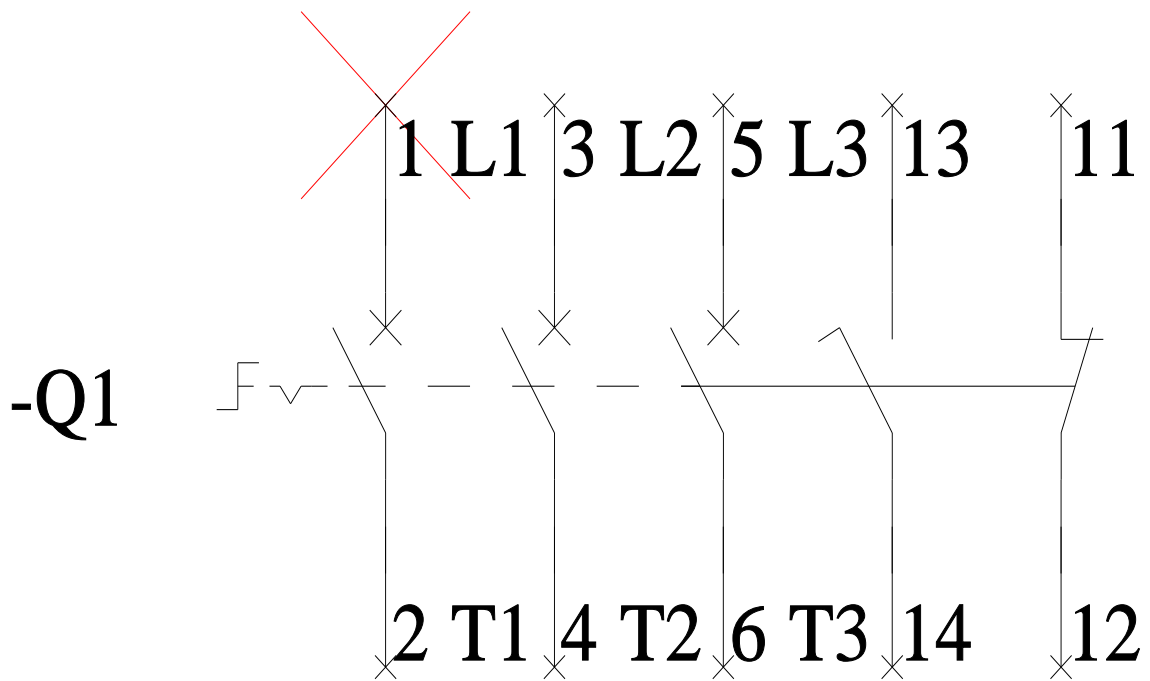
CAx-Online-Generator

<http://www.siemens.com/cax>

Tender specifications

<http://www.siemens.com/specifications>





-CI

