



Overload relay 80...100 A Thermal For motor protection Size S3, Class 10
 Contactor mounting Main circuit: Screw Auxiliary circuit: spring-type
 terminal Manual-Automatic-Reset

product brand name	SIRIUS
product designation	thermal overload relay
product type designation	3RU2
General technical data	
size of overload relay	S3
size of contactor can be combined company-specific	S3
power loss [W] for rated value of the current at AC in hot operating state	21 W
• per pole	7 W
insulation voltage with degree of pollution 3 at AC rated value	1 000 V
surge voltage resistance rated value	8 kV
maximum permissible voltage for safe isolation in networks with grounded star point	
• between auxiliary and auxiliary circuit	440 V
• between auxiliary and auxiliary circuit	440 V
• between main and auxiliary circuit	440 V
• between main and auxiliary circuit	440 V
shock resistance acc. to IEC 60068-2-27	8g / 11 ms
type of protection according to ATEX directive 2014/34/EU	Ex II (2) GD
certificate of suitability according to ATEX directive 2014/34/EU	DMT 98 ATEX G 001
reference code acc. to IEC 81346-2	F
Substance Prohibitance (Date)	01.03.2017 00:00:00
Ambient conditions	
installation altitude at height above sea level maximum	2 000 m
ambient temperature	
• during operation	-40 ... +70 °C
• during storage	-55 ... +80 °C
• during transport	-55 ... +80 °C
temperature compensation	-40 ... +60 °C
relative humidity during operation	10 ... 95 %
Main circuit	
number of poles for main current circuit	3
adjustable current response value current of the current-dependent overload release	80 ... 100 A
operating voltage	
• rated value	690 V
• at AC-3 rated value maximum	1 000 V
operating frequency rated value	50 ... 60 Hz

operational current rated value	100 A
Auxiliary circuit	
design of the auxiliary switch	integrated
number of NC contacts for auxiliary contacts • note	1 for contactor disconnection
number of NO contacts for auxiliary contacts • note	1 for message "Tripped"
number of CO contacts for auxiliary contacts	0
operational current of auxiliary contacts at AC-15 • at 24 V • at 110 V • at 120 V • at 125 V • at 230 V • at 400 V	3 A 3 A 3 A 3 A 2 A 1 A
operational current of auxiliary contacts at DC-13 • at 24 V • at 60 V • at 110 V • at 125 V • at 220 V	2 A 0.3 A 0.22 A 0.22 A 0.11 A
design of the miniature circuit breaker for short-circuit protection of the auxiliary switch required	6A (SCC less than equal to 0.5 kA; U less than equal to 260V)
contact rating of auxiliary contacts according to UL	B600 / R300
Protective and monitoring functions	
trip class	CLASS 10
design of the overload release	thermal
UL/CSA ratings	
full-load current (FLA) for 3-phase AC motor • at 480 V rated value • at 600 V rated value	96 A 99 A
Short-circuit protection	
design of the fuse link • for short-circuit protection of the main circuit — with type of coordination 1 required — with type of assignment 2 required • for short-circuit protection of the auxiliary switch required	gG: 250 A gG: 200 A fuse gG: 6 A, quick: 10 A
Installation/ mounting/ dimensions	
mounting position	any
fastening method	Contactor mounting
height	105 mm
width	70 mm
depth	125 mm
Connections/ Terminals	
product component removable terminal for auxiliary and control circuit	No
type of electrical connection • for main current circuit • for auxiliary and control circuit	screw-type terminals spring-loaded terminals
arrangement of electrical connectors for main current circuit	Top and bottom
type of connectable conductor cross-sections • for main contacts — solid — stranded — solid or stranded — finely stranded with core end processing • at AWG cables for main contacts	2x (2.5 ... 16 mm ²) 2x (6 ... 16 mm ²), 2x (10 ... 50 mm ²), 1x (10 ... 70 mm ²) 2x (2,5 ... 50 mm ²), 1x (10 ... 70 mm ²) 2x (2.5 ... 35 mm ²), 1x (2.5 ... 50 mm ²) 2x (10 ... 1/0), 1x (10 ... 2/0)
type of connectable conductor cross-sections	

<ul style="list-style-type: none"> for auxiliary contacts <ul style="list-style-type: none"> — solid or stranded — finely stranded with core end processing — finely stranded without core end processing at AWG cables for auxiliary contacts 	2x (0.5 ... 2.5 mm ²) 2x (0.5 ... 1.5 mm ²) 2x (0.5 ... 2.5 mm ²) 2x (20 ... 14)
tightening torque	
<ul style="list-style-type: none"> for main contacts for ring cable lug 	4.5 ... 6 N·m
outer diameter of the usable ring cable lug maximum	19 mm
tightening torque	
<ul style="list-style-type: none"> for main contacts with screw-type terminals 	4.5 ... 6 N·m
design of screwdriver shaft	Hexagonal socket
size of the screwdriver tip	4 mm hexagon socket
design of the thread of the connection screw	
<ul style="list-style-type: none"> for main contacts 	M8

Safety related data	
T1 value for proof test interval or service life acc. to IEC 61508	20 y
protection class IP on the front acc. to IEC 60529	IP20
touch protection on the front acc. to IEC 60529	finger-safe, for vertical contact from the front

Display	
display version for switching status	Slide switch

Certificates/ approvals	
General Product Approval	For use in hazardous locations



Declaration of Conformity	Test Certificates	Marine / Shipping
----------------------------------	--------------------------	--------------------------



[Special Test Certificate](#)

[Type Test Certificates/Test Report](#)



Marine / Shipping	other	Railway
--------------------------	--------------	----------------

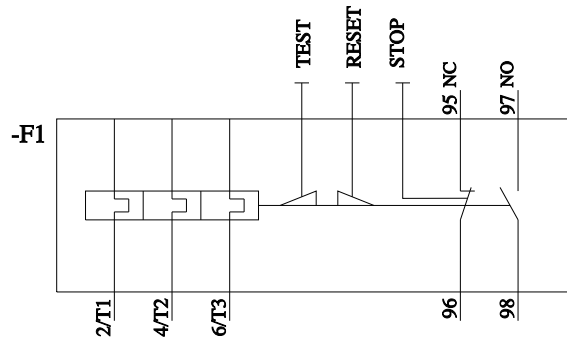
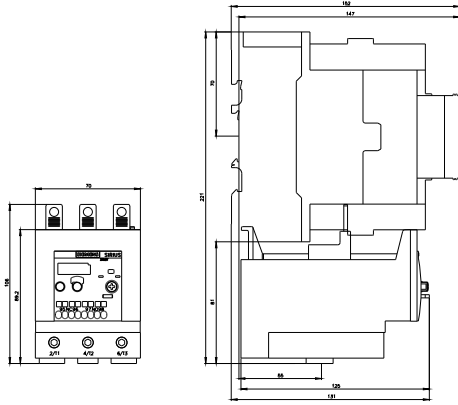


[Confirmation](#)

[Special Test Certificate](#)

Further information

Information- and Downloadcenter (Catalogs, Brochures,...)
<https://www.siemens.com/ic10>
Industry Mall (Online ordering system)
<https://mall.industry.siemens.com/mall/en/en/Catalog/product?mlfb=3RU2146-4MD0>
Cax online generator
<http://support.automation.siemens.com/WWW/CAXorder/default.aspx?lang=en&mlfb=3RU2146-4MD0>
Service&Support (Manuals, Certificates, Characteristics, FAQs,...)
<https://support.industry.siemens.com/cs/ww/en/ps/3RU2146-4MD0>
Image database (product images, 2D dimension drawings, 3D models, device circuit diagrams, EPLAN macros, ...)
http://www.automation.siemens.com/bilddb/cax_de.aspx?mlfb=3RU2146-4MD0&lang=en
Characteristic: Tripping characteristics, I^t, Let-through current
<https://support.industry.siemens.com/cs/ww/en/ps/3RU2146-4MD0/char>
Further characteristics (e.g. electrical endurance, switching frequency)
<http://www.automation.siemens.com/bilddb/index.aspx?view=Search&mlfb=3RU2146-4MD0&objecttype=14&gridview=view1>



last modified:

9/29/2021 