



Undervoltage release 24 V DC with screw terminal for circuit breaker 3RV2

General technical data		
product brand name	SIRIUS	
product designation	undervoltage release	
size of the circuit-breaker	S00, S0, S2, S3	
suitability for use	motor circuit breaker	
protection class IP on the front acc. to IEC 60529	IP20	
touch protection on the front acc. to IEC 60529	finger-safe, for vertical contact from the front	
design of short-circuit protection	fuse	
degree of pollution	3	
insulation voltage rated value	690 V	
insulation voltage with degree of pollution 3 at AC rated value	690 V	
ambient temperature		
• during storage	-50 ... +80 °C	
• during operation	-20 ... +60 °C	
reference code acc. to DIN EN 61346-2	F	
Auxiliary circuit		
number of NC contacts for auxiliary contacts instantaneous contact	0	
number of NO contacts for auxiliary contacts instantaneous contact	0	
number of NO contacts for auxiliary contacts leading contact	0	
number of CO contacts of auxiliary contacts instantaneous contact	0	
Control circuit/ Control		
type of voltage of the control supply voltage	DC	
control supply voltage		
• 1		
— at DC		
— rated value	24 V	
Installation/ mounting/ dimensions		
fastening method	snap-on mounting	
width	18.5 mm	
height	90 mm	
depth	68 mm	
Certificates/ approvals		
certificate of suitability	CE / UL / CSA	
General Product Approval	Declaration of Conformity	Test Certificates



[UK Declaration of Conformity](#)



[Special Test Certificate](#)

Test Certificates

Marine / Shipping

[Type Test Certificates/Test Report](#)



Marine / Shipping

other

Railway



[Confirmation](#)



[Vibration and Shock](#)

Further information

Information- and Downloadcenter (Catalogs, Brochures,...)

<https://www.siemens.com/ic10>

Industry Mall (Online ordering system)

<https://mall.industry.siemens.com/mall/en/en/Catalog/product?mlfb=3RV2902-1AB4>

Cax online generator

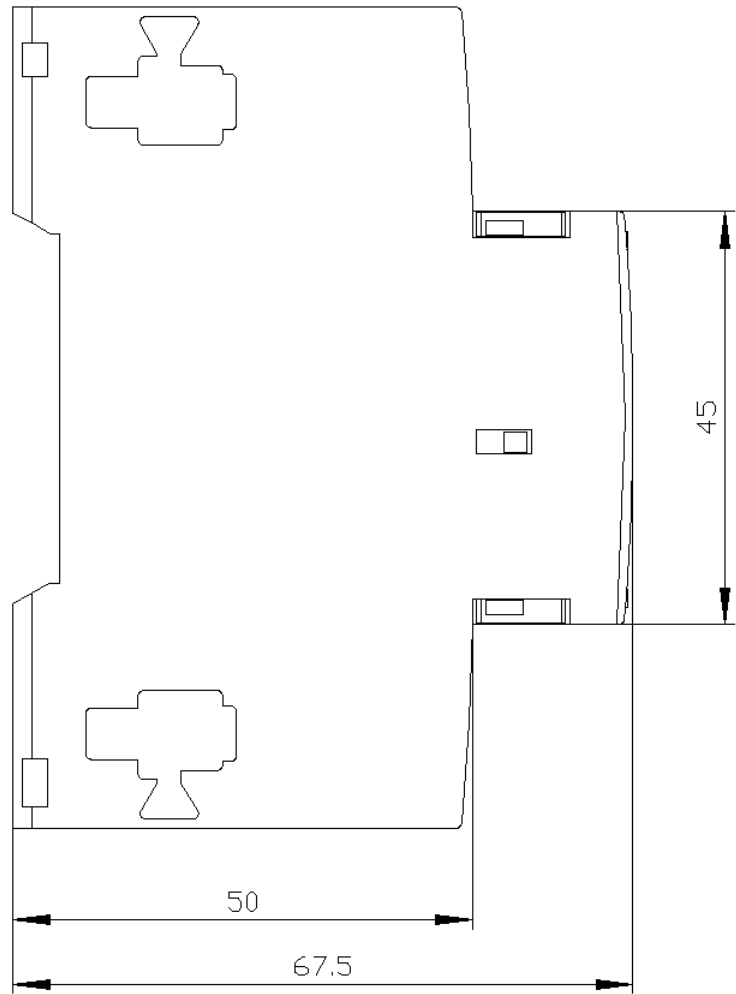
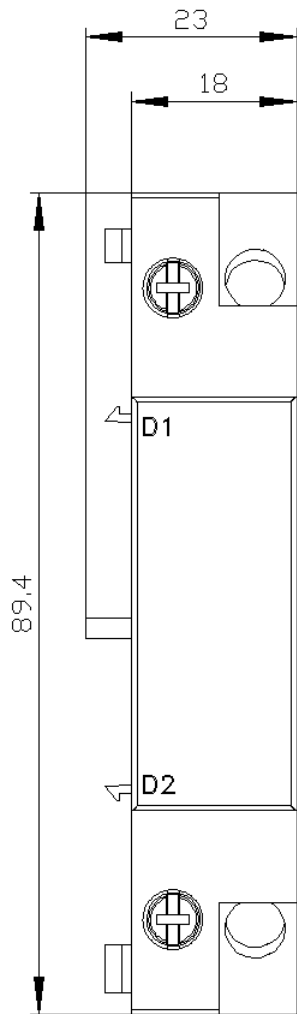
<http://support.automation.siemens.com/WW/CAXorder/default.aspx?lang=en&mlfb=3RV2902-1AB4>

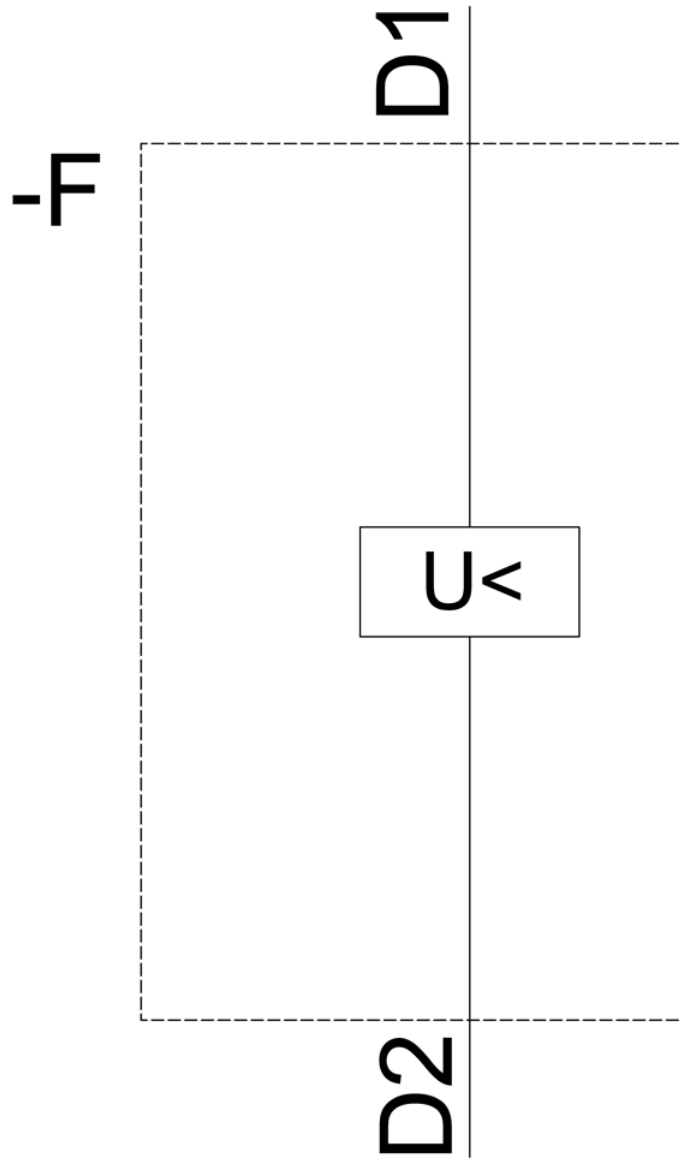
Service&Support (Manuals, Certificates, Characteristics, FAQs,...)

<https://support.industry.siemens.com/cs/ww/en/ps/3RV2902-1AB4>

Image database (product images, 2D dimension drawings, 3D models, device circuit diagrams, EPLAN macros, ...)

http://www.automation.siemens.com/bilddb/cax_de.aspx?mlfb=3RV2902-1AB4&lang=en





last modified:

12/15/2020 