



Undervoltage release 230 V AC/50 Hz, 240 V AC/60 Hz with screw terminal for circuit breaker 3RV2

General technical data	
product brand name	SIRIUS
product designation	undervoltage release
size of the circuit-breaker	S00, S0, S2, S3
suitability for use	motor circuit breaker
protection class IP on the front acc. to IEC 60529	IP20
touch protection on the front acc. to IEC 60529	finger-safe, for vertical contact from the front
design of short-circuit protection	fuse
degree of pollution	3
insulation voltage rated value	690 V
insulation voltage with degree of pollution 3 at AC rated value	690 V
ambient temperature	
• during storage	-50 ... +80 °C
• during operation	-20 ... +60 °C
reference code acc. to DIN EN 61346-2	F
Auxiliary circuit	
number of NC contacts for auxiliary contacts instantaneous contact	0
number of NO contacts for auxiliary contacts instantaneous contact	0
number of NO contacts for auxiliary contacts leading contact	0
number of CO contacts of auxiliary contacts instantaneous contact	0
Control circuit/ Control	
type of voltage of the control supply voltage	AC
control supply voltage frequency	
• 1	
— initial rated value	50 Hz
— final rated value	60 Hz
control supply voltage	
• 1	
— at AC	
— at 50 Hz rated value	230 V
— at 60 Hz rated value	240 V
Installation/ mounting/ dimensions	
fastening method	snap-on mounting
width	18.5 mm
height	90 mm

depth	68 mm	
Certificates/ approvals		
certificate of suitability	CE / UL / CSA	
General Product Approval	Declaration of Conformity	Test Certificates



[UK Declaration of Conformity](#)



[Type Test Certificates/Test Report](#)

Test Certificates	Marine / Shipping
-------------------	-------------------

[Special Test Certificate](#)



Marine / Shipping	other	Railway
-------------------	-------	---------



[Confirmation](#)



[Vibration and Shock](#)

Further information

Information- and Downloadcenter (Catalogs, Brochures,...)

<https://www.siemens.com/ic10>

Industry Mall (Online ordering system)

<https://mall.industry.siemens.com/mall/en/en/Catalog/product?mlfb=3RV2902-1AP0>

Cax online generator

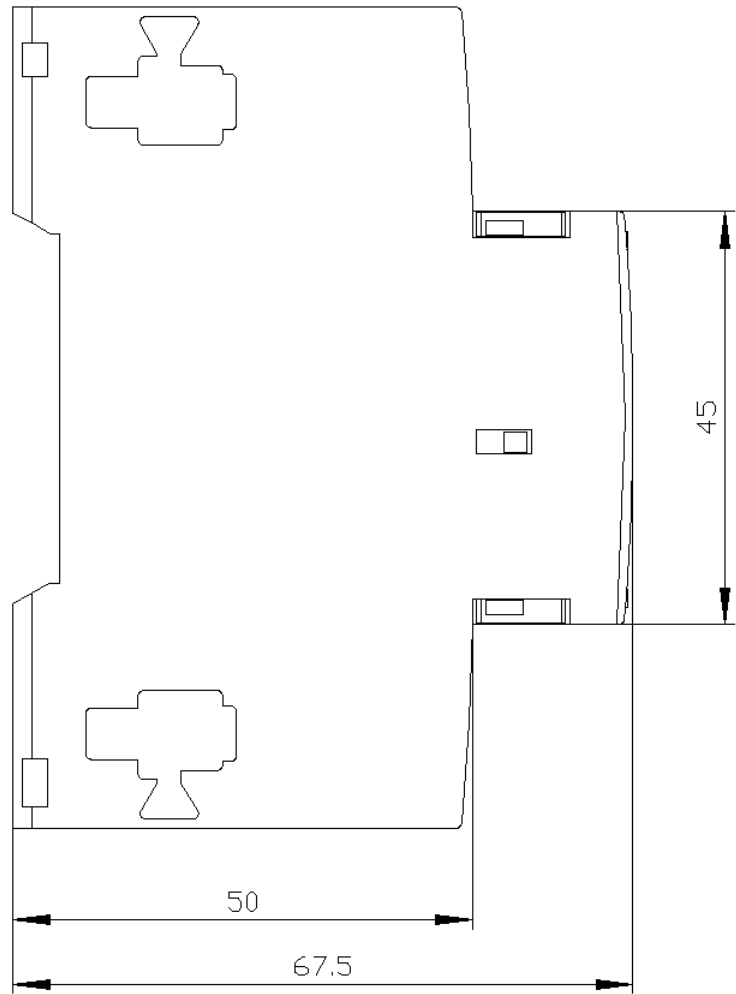
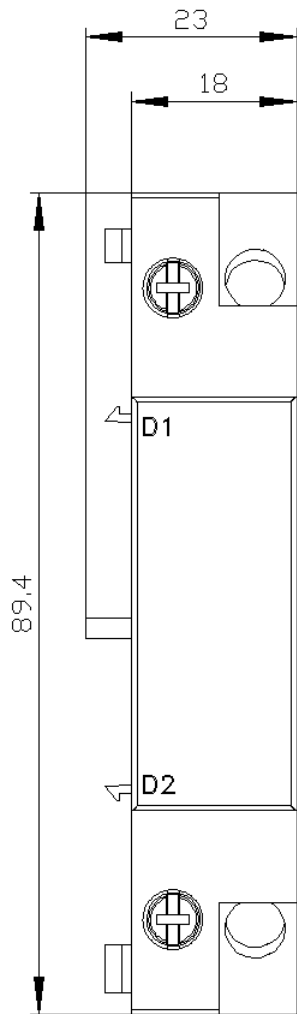
<http://support.automation.siemens.com/WW/CAXorder/default.aspx?lang=en&mlfb=3RV2902-1AP0>

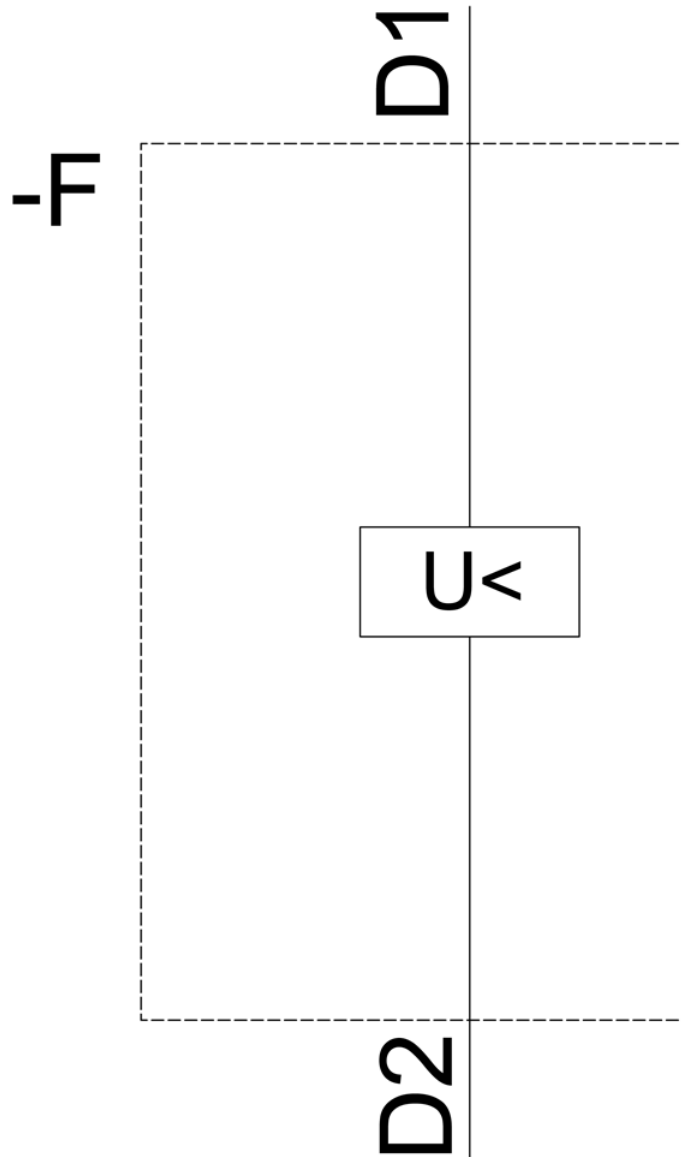
Service&Support (Manuals, Certificates, Characteristics, FAQs,...)

<https://support.industry.siemens.com/cs/ww/en/ps/3RV2902-1AP0>

Image database (product images, 2D dimension drawings, 3D models, device circuit diagrams, EPLAN macros, ...)

http://www.automation.siemens.com/bilddb/cax_de.aspx?mlfb=3RV2902-1AP0&lang=en





last modified:

12/15/2020 