



Undervoltage release 24 V AC, 50 Hz/60 Hz with leading auxiliary contact 2 NO with screw terminal for circuit breaker 3RV2

General technical data	
product brand name	SIRIUS
product designation	undervoltage release
size of the circuit-breaker	S00, S0, S2, S3
design of the product	with 2 auxiliary contacts
suitability for use	motor circuit breaker
protection class IP on the front acc. to IEC 60529	IP20
touch protection on the front acc. to IEC 60529	finger-safe, for vertical contact from the front
design of short-circuit protection	fuse
degree of pollution	3
insulation voltage rated value	690 V
insulation voltage with degree of pollution 3 at AC rated value	690 V
ambient temperature	
• during storage	-50 ... +80 °C
• during operation	-20 ... +60 °C
reference code acc. to DIN EN 61346-2	F
Auxiliary circuit	
number of NC contacts for auxiliary contacts instantaneous contact	0
number of NO contacts for auxiliary contacts instantaneous contact	0
number of NO contacts for auxiliary contacts leading contact	2
number of CO contacts of auxiliary contacts instantaneous contact	0
Control circuit/ Control	
type of voltage of the control supply voltage	AC
control supply voltage frequency	
• 1	
— initial rated value	50 Hz
control supply voltage	
• 1	
— at AC	
— at 50 Hz rated value	24 V
Installation/ mounting/ dimensions	
fastening method	snap-on mounting
width	18.5 mm
height	90 mm
depth	68 mm

Certificates/ approvals

certificate of suitability	CE / UL / CSA
General Product Approval	Declaration of Conformity
	Test Certificates



[UK Declaration of Conformity](#)

[Type Test Certificates/Test Report](#)

Test Certificates **Marine / Shipping**

[Special Test Certificate](#)



Marine / Shipping **other** **Railway**



[Confirmation](#)



[Vibration and Shock](#)

Further information

Information- and Downloadcenter (Catalogs, Brochures,...)

<https://www.siemens.com/ic10>

Industry Mall (Online ordering system)

<https://mall.industry.siemens.com/mall/en/en/Catalog/product?mlfb=3RV2922-1CB0>

Cax online generator

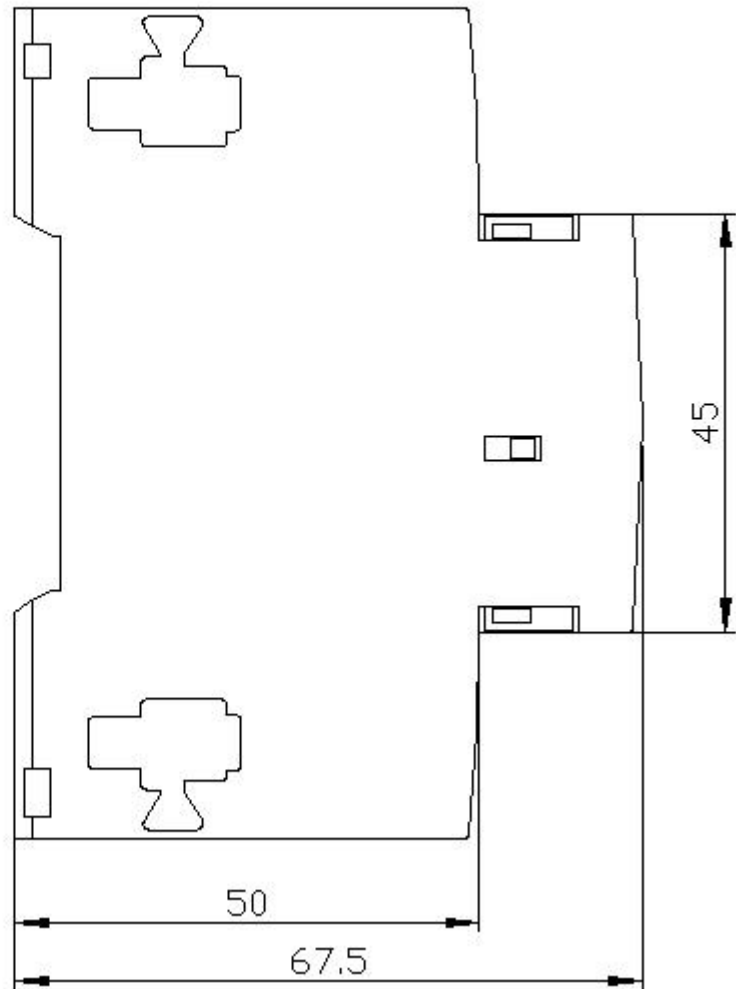
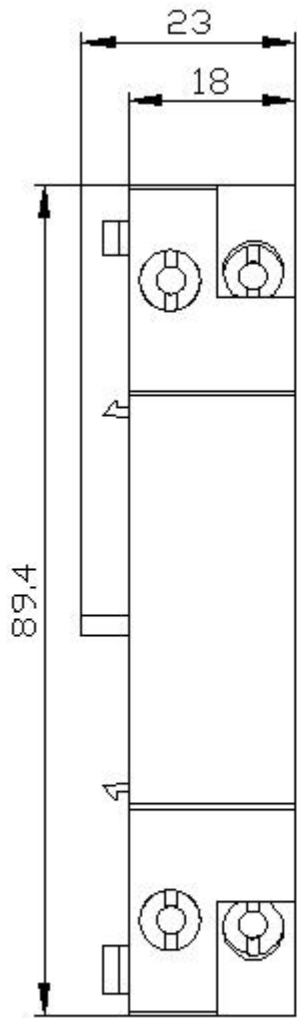
<http://support.automation.siemens.com/WW/CAXorder/default.aspx?lang=en&mlfb=3RV2922-1CB0>

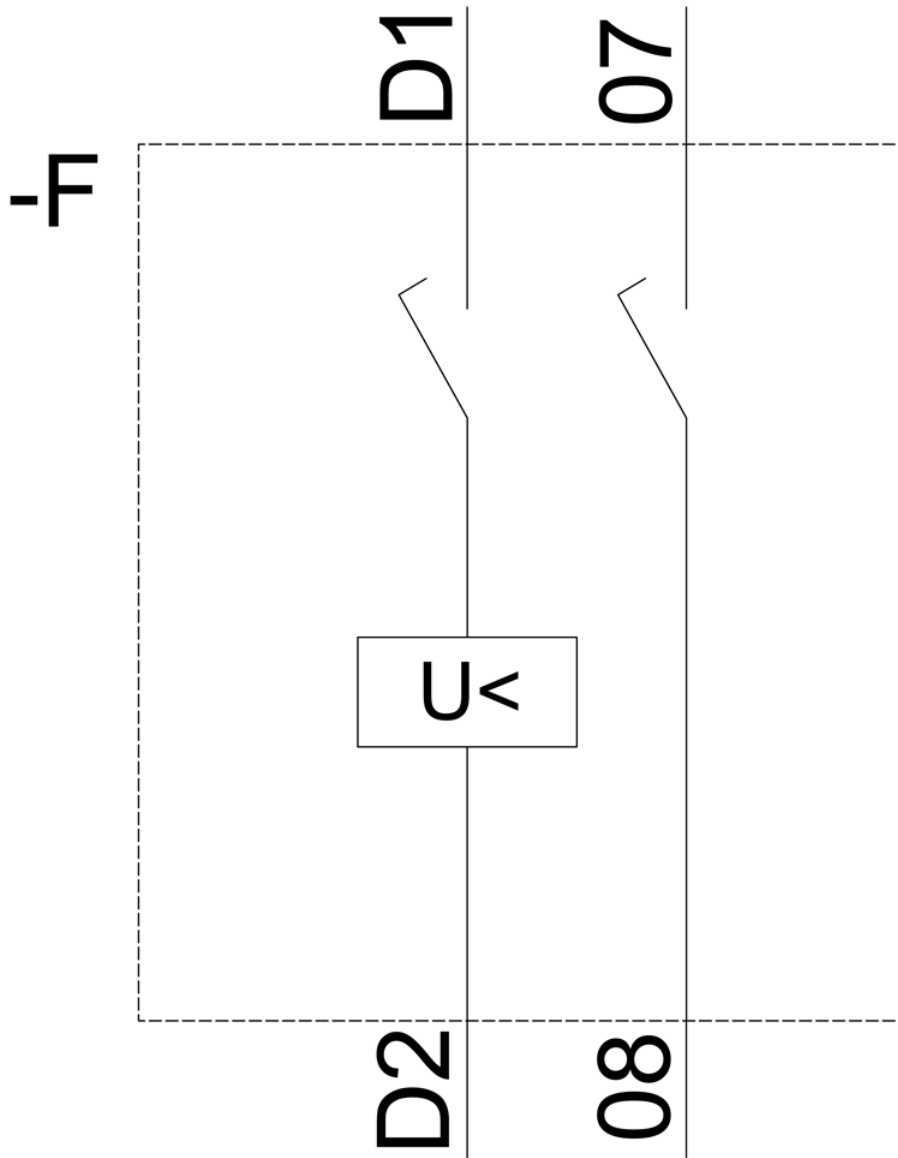
Service&Support (Manuals, Certificates, Characteristics, FAQs,...)

<https://support.industry.siemens.com/cs/ww/en/ps/3RV2922-1CB0>

Image database (product images, 2D dimension drawings, 3D models, device circuit diagrams, EPLAN macros, ...)

http://www.automation.siemens.com/bilddb/cax_de.aspx?mlfb=3RV2922-1CB0&lang=en





last modified:

12/15/2020 