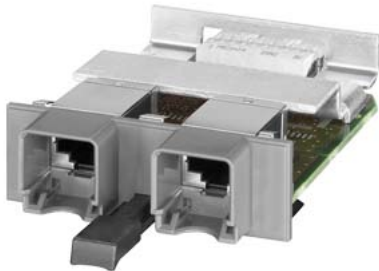


product description

XR-300 media module

SCALANCE X accessory; Media module MM992-2CUC; 2x 10/100/1000 Mbit/s RJ45 ports, electrical; with securing collar Conformal coating



interfaces	
number of electrical/optical connections / for network components or terminal equipment / maximum	2
number of electrical connections <ul style="list-style-type: none"> for network components or terminal equipment / maximum 	2
number of 10/100/1000 Mbit/s RJ45 ports	2
type of electrical connection <ul style="list-style-type: none"> for network components or terminal equipment 	RJ45
ambient conditions	
ambient temperature <ul style="list-style-type: none"> during operation during storage during transport 	-40 ... +70 °C -40 ... +85 °C -40 ... +85 °C
relative humidity / at 25 °C / without condensation / during operation / maximum	95 %
protection class IP	IP20
design, dimensions and weights	
design	Media module with retaining collar
width	60 mm
height	22 mm
depth	100 mm
net weight	0.08 kg
product feature / conformal coating	Yes
fastening method <ul style="list-style-type: none"> installation in media module slot 	latched Yes
standards, specifications, approvals	
standard <ul style="list-style-type: none"> for FM for hazardous zone for safety / from CSA and UL for hazardous zone / from CSA and UL for emitted interference for interference immunity 	FM3611: Class 1, Divison 2, Group A, B, C, D / T4, Class 1, Zone 2, Group IIC, T4 EN 60079-0: 2006, EN60079-15: 2005, II 3 G Ex nA II T4, KEMA 07 ATEX 0145 X UL 60950-1, CSA C22.2 No. 60950-1 UL 1604 and UL 2279-15 (Hazardous Location), CSA C22.2 No. 213-M1987, Class 1 / Division 2 / Group A, B, C, D / T4, Class 1 / Zone 2 / Group IIC / T4 EN 61000-6-4:2007 (Class A) EN 61000-6-2:2005

certificate of suitability	EN 61000-6-2:2005, EN 61000-6-4:2007
• CE marking	Yes
• C-Tick	Yes
• KC approval	Yes
• CCC / for hazardous zone according to GB standard	Yes
• railway application in accordance with EN 50155	Yes
• railway application in accordance with EN 50121-4	Yes
• fire protection in accordance with EN 45545-2	Yes
MTBF	250 y

further information / internet-Links

Internet-Link	
• to web page: selection aid TIA Selection Tool	http://www.siemens.com/tia-selection-tool
• to website: Industrial communication	http://www.siemens.com/simatic-net
• to website: Industry Mall	https://mall.industry.siemens.com
• to website: Information and Download Center	http://www.siemens.com/industry/infocenter
• to website: Image database	http://automation.siemens.com/bilddb
• to website: CAx-Download-Manager	http://www.siemens.com/cax
• to website: Industry Online Support	https://support.industry.siemens.com

last modified:

6/25/2021 