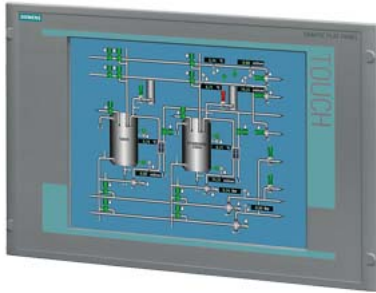


SIMATIC Flat Panel 15, 15-inch TFT screen with 1024x 768 pixels resolution for 24 V DC, VGA, DVI-D interface, incl. VGA cable 1.8 m



General information	
Product type designation	Flat Panel
Display	
Design of display	TFT display, LED backlighting
Screen diagonal	15.6 in; 15"
Display width	304.1 mm
Display height	228.1 mm
On Screen Display (OSD) configuration	Yes
Number of colors	16 000 000; 16.2 million
Viewing angle	100° x 90° (min)
Resolution (pixels)	
• Image resolution	1 024 x 768
• Horizontal image resolution	1 024 pixel
• Vertical image resolution	768 pixel
General features	
• Brightness/contrast	> 260 cd/m <sup>2</sup> / 350:1
• Detachable from computer unit	5 m
Backlighting	
• Type of backlighting	LED, dimmable
• MTBF backlighting (at 25 °C)	50 000 h; At 25 °C
• Backlight dimmable	Yes; 0-100 %
Control elements	
Control elements	none
Input device	
• Integrated mouse cursor control	No
Keyboard fonts	
• Function keys	No
— Number of function keys	0
Touch operation	
• Design as touch screen	No
Installation type/mounting	
Design	Built-in unit
Front mounting	Yes
VESA mounting	No
Built-in unit	Yes; Portrait mode possible
maximum permitted forward tilt angle from vertical	35°; max. 40 °C
maximum permitted backward tilt angle from vertical	70°; max. 40 °C

Supply voltage	
Type of supply voltage	DC
Rated value (DC)	24 V
permissible range, lower limit (DC)	19.2 V
permissible range, upper limit (DC)	28.8 V
Interfaces	
Video interfaces	
<ul style="list-style-type: none"> <li>analog video signal (VGA)</li> </ul>	Yes
Degree and class of protection	
IP (at the front)	IP65
Standards, approvals, certificates	
CE mark	Yes
CSA approval	Yes
UL approval	Yes
EAC (formerly Gost-R)	No
Marine approval	
<ul style="list-style-type: none"> <li>Germanischer Lloyd (GL)</li> <li>American Bureau of Shipping (ABS)</li> <li>Bureau Veritas (BV)</li> <li>Det Norske Veritas (DNV)</li> <li>Lloyds Register of Shipping (LRS)</li> </ul>	Yes; Optional Yes; Optional Yes; Optional Yes; Optional Yes; Optional
Ambient conditions	
Ambient temperature during operation	
<ul style="list-style-type: none"> <li>min.</li> <li>max.</li> </ul>	0 °C 50 °C
Ambient temperature during storage/transportation	
<ul style="list-style-type: none"> <li>min.</li> <li>max.</li> </ul>	-20 °C 70 °C
Mechanics/material	
Enclosure material (front)	
<ul style="list-style-type: none"> <li>Aluminum</li> </ul>	Yes
Dimensions	
Width of the housing front	483 mm
Height of housing front	310 mm
Mounting cutout, width	450 mm
Mounting cutout, height	290 mm
Overall depth	55 mm
<b>last modified:</b>	12/18/2020 