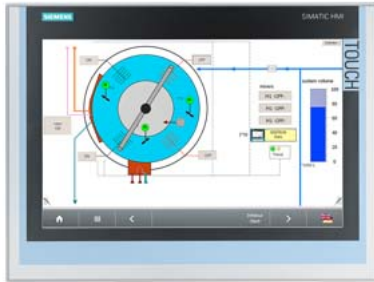


SIMATIC ITC 1500, Industrial Thin Client, 15" widescreen TFT display, Touch operation, Supported protocols: RDP, VNC, SMARTSERVER, Web



General information	
Product type designation	ITC1500
Display	
Design of display	TFT widescreen display, LED backlighting
Screen diagonal	15.4 in; 15"
Display width	331.2 mm
Display height	207 mm
Number of colors	16 777 216
Resolution (pixels)	
<ul style="list-style-type: none"> Image resolution Horizontal image resolution Vertical image resolution 	1 280 x 800 1 280 pixel 800 pixel
General features	
<ul style="list-style-type: none"> Detachable from computer unit 	100 m
Backlighting	
<ul style="list-style-type: none"> Type of backlighting Backlight dimmable 	LED, dimmable Yes; 5-100 %
Control elements	
Control elements	single-touch screen
Touch operation	
<ul style="list-style-type: none"> Design as touch screen Monitor keyboard 	Yes Yes
Installation type/mounting	
Design	Built-in unit
Front mounting	Yes
Support arm mounting	No
Stand mounting	No
Built-in unit	Yes
Supply voltage	
Type of supply voltage	DC
Rated value (DC)	24 V
permissible range, lower limit (DC)	19.2 V
permissible range, upper limit (DC)	28.8 V
Input current	
Current consumption, max.	1.5 A
Starting current inrush I ^{2t}	0.5 A ² ·s
Interfaces	

Number of industrial Ethernet interfaces	1
Number of USB interfaces	2; on rear
USB on the rear	Yes; 2x onboard
Connection for keyboard/mouse	USB
Industrial Ethernet	
• Transmission rate, max.	1 000 Mbit/s
Protocols	
Protocols (Ethernet)	
• TCP/IP	Yes
• DHCP	Yes
• SNMP	Yes
• DCP	Yes
• LLDP	Yes
WEB characteristics	
• HTTP	Yes
• HTML	Yes; HTML5
• XML	Yes
• CSS	Yes
• JavaScript	Yes
Protocols (terminal link)	
• Sm@rtServer	Yes
• RDP	Yes
• VNC viewer	Yes
• Citrix	No
• SINUMERIK	No
Degree and class of protection	
IP (at the front)	IP65
IP (rear)	IP20
Standards, approvals, certificates	
CE mark	Yes
cULus	Yes
RCM (formerly C-TICK)	Yes
KC approval	Yes
Use in hazardous areas	
• cULus Class I Zone 1	No
• cULus Class I Zone 2, Division 2	Yes; Available soon
• FM Class I Division 2	Yes; Available soon
Ambient conditions	
Ambient temperature during operation	
• min.	0 °C
• max.	50 °C
Ambient temperature during storage/transportation	
• min.	-20 °C
• max.	60 °C
Relative humidity	
• Operation, max.	90 %
Software	
Web browser	Yes
PDF reader	Yes
configuration / header	
Configuration	
• Local	Yes
• Remote	Yes; With Remote Configuration Center (RCC) as of V2.0
Languages	
Online languages	
• Number of online/runtime languages	2; german / english
Peripherals/Options	

USB memory	Yes; USB storage medium can be connected
Mechanics/material	
Enclosure material (front) <ul style="list-style-type: none"> • Aluminum 	Yes
Dimensions	
Width of the housing front	415 mm
Height of housing front	310 mm
Mounting cutout, width	396 mm
Mounting cutout, height	291 mm
Overall depth	75 mm
Weights	
Weight (without packaging)	5.2 kg
Weight (with packaging)	5.7 kg
last modified:	1/16/2021 