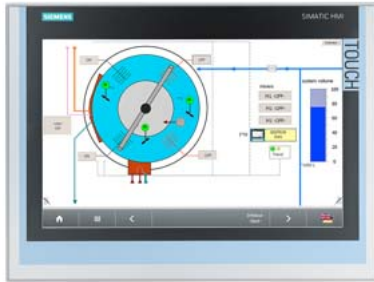


SIMATIC IFP1500 Flat Panel 15" display (16:10), Touch, Standard up to 5 m, 1280x 800 pixels, for 24 V DC, display port/DVI interface incl. DVI/USB cable 1.8 m



General information	
Product type designation	IFP1500
Short designation	Flat Panel 15" touch
Display	
Design of display	TFT widescreen display, LED backlighting
Screen diagonal	15.4 in; 15"
Screen diagonal [cm]	40 cm
Display width	331.2 mm
Display height	207 mm
On Screen Display (OSD) configuration	No; Adjustable by means of software
Number of colors	16 777 216; 24 bit
Viewing angle	170° x 170°
Resolution (pixels)	
<ul style="list-style-type: none"> • Image resolution • Horizontal image resolution • Vertical image resolution • Pixel size, horizontal • Pixel size, vertical 	1 280 x 800 1 280 pixel 800 pixel 0.259 mm 0.259 mm
General features	
<ul style="list-style-type: none"> • Brightness/contrast • Detachable from computer unit • Luminance 	400 cd/m ² / 1 000:1 5 m 400 cd/m ²
Backlighting	
<ul style="list-style-type: none"> • Type of backlighting • MTBF backlighting (at 25 °C) • Backlight dimmable 	LED 50 000 h; At 25°C Yes; 0-100 %
Control elements	
Control elements	single-touch screen
Input device	
<ul style="list-style-type: none"> • Integrated mouse cursor control 	No
Keyboard fonts	
<ul style="list-style-type: none"> • Function keys — Number of function keys 	No 0
Touch operation	
<ul style="list-style-type: none"> • Design as touch screen • Monitor keyboard 	Yes; Analog-resistive Yes
Installation type/mounting	

Design	Built-in unit
Front mounting	Yes
Built-in unit	Yes; Portrait mode possible
maximum permitted forward tilt angle from vertical	35°
maximum permitted backward tilt angle from vertical	35°
Supply voltage	
Type of supply voltage	DC
Rated value (DC)	24 V
permissible range, lower limit (DC)	19.2 V
permissible range, upper limit (DC)	28.8 V
Power loss	
Power loss, typ.	40 W
Power loss, max.	65 W
Interfaces	
Video interfaces	
<ul style="list-style-type: none"> analog video signal (VGA) 	No
<ul style="list-style-type: none"> DVI-D 	Yes
<ul style="list-style-type: none"> DisplayPort 	Yes; DisplayPort V1.1
Touch interfaces	
<ul style="list-style-type: none"> USB 	Yes
Degree and class of protection	
IP (at the front)	IP65
IP (rear)	IP20
NEMA (front) <ul style="list-style-type: none"> Enclosure Type 4 at the front 	Yes
Standards, approvals, certificates	
CE mark	Yes
cULus	Yes; Corresponds to UL 508
RCM (formerly C-TICK)	Yes
KC approval	Yes
Use in hazardous areas	
<ul style="list-style-type: none"> FM Class I Division 2 	Yes
Ambient conditions	
Ambient temperature during operation	
<ul style="list-style-type: none"> min. 	0 °C
<ul style="list-style-type: none"> max. 	50 °C; Vertical installation (horizontal)
Ambient temperature during storage/transportation	
<ul style="list-style-type: none"> min. 	-20 °C
<ul style="list-style-type: none"> max. 	60 °C
Relative humidity	
<ul style="list-style-type: none"> Operation, max. 	95 %; no condensation
Vibrations	
<ul style="list-style-type: none"> Vibration load in operation 	10 m/s ²
<ul style="list-style-type: none"> Vibration load during transport/storage 	10 m/s ²
Shock testing	
<ul style="list-style-type: none"> Shock load during operation 	150 m/s ²
<ul style="list-style-type: none"> shock acceleration during storage/transport 	150 m/s ²
Mechanics/material	
Enclosure material (front) <ul style="list-style-type: none"> Aluminum 	Yes
Dimensions	
Width of the housing front	415 mm
Height of housing front	310 mm
Mounting cutout, width	396 mm; Tolerance: +1 mm
Mounting cutout, height	291 mm; Tolerance: +1 mm
Overall depth	62.5 mm
Weights	

Weight (without packaging)

3.9 kg

Weight (with packaging)

5 kg

last modified:

12/16/2020 