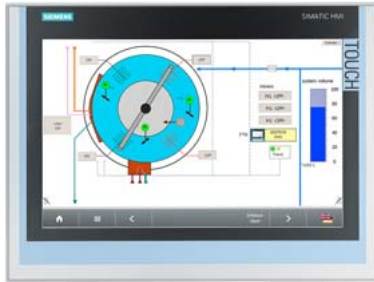


SIMATIC IFP1500 Flat Panel 15" display (16:10), Touch, Extended version up to 30 m, 1280x 800 pixels, for 24 V DC and 100-240 V AC, display port/DVI interface incl. DVI/USB cable 1.8 m



General information	
Product type designation	IFP1500
Short designation	Flat Panel 15" touch ext.
Display	
Design of display	TFT widescreen display, LED backlighting
Screen diagonal	15.4 in; 15"
Screen diagonal [cm]	40 cm
Display width	331.2 mm
Display height	207 mm
On Screen Display (OSD) configuration	No; Adjustable by means of software
Number of colors	16 777 216; 24 bit
Viewing angle	170° x 170°
Resolution (pixels)	
• Image resolution	1 280 x 800
• Horizontal image resolution	1 280 pixel
• Vertical image resolution	800 pixel
• Pixel size, horizontal	0.259 mm
• Pixel size, vertical	0.259 mm
General features	
• Brightness/contrast	400 cd/m <sup>2</sup> / 1 000:1
• Detachable from computer unit	5 m
• Luminance	400 cd/m <sup>2</sup>
Backlighting	
• Type of backlighting	LED
• MTBF backlighting (at 25 °C)	50 000 h; At 25°C
• Backlight dimmable	Yes; 0-100 %
Control elements	
Control elements	single-touch screen
Input device	
• Integrated mouse cursor control	No
Keyboard fonts	
• Function keys	No
— Number of function keys	0
Touch operation	
• Design as touch screen	Yes; Analog-resistive
• Monitor keyboard	Yes
Installation type/mounting	

Design	Built-in unit
Front mounting	Yes
Built-in unit	Yes; Portrait mode possible
maximum permitted forward tilt angle from vertical	35°
maximum permitted backward tilt angle from vertical	35°
<b>Supply voltage</b>	
Type of supply voltage	AC/DC
Rated value (DC)	24 V
permissible range, lower limit (DC)	19.2 V
permissible range, upper limit (DC)	28.8 V
permissible range, lower limit (AC)	90 V
permissible range, upper limit (AC)	264 V
<b>Power loss</b>	
Power loss, typ.	40 W
Power loss, max.	65 W
<b>Interfaces</b>	
USB on the rear	Yes; 2x onboard
Connection for keyboard/mouse	USB
<b>Video interfaces</b>	
<ul style="list-style-type: none"> <li>• analog video signal (VGA)</li> </ul>	No
<ul style="list-style-type: none"> <li>• DVI-D</li> </ul>	Yes
<ul style="list-style-type: none"> <li>• DisplayPort</li> </ul>	Yes; DisplayPort V1.1
<b>Touch interfaces</b>	
<ul style="list-style-type: none"> <li>• USB</li> </ul>	Yes
<b>Degree and class of protection</b>	
IP (at the front)	IP65
IP (rear)	IP20
NEMA (front) <ul style="list-style-type: none"> <li>• Enclosure Type 4 at the front</li> </ul>	Yes
<b>Standards, approvals, certificates</b>	
CE mark	Yes
cULus	Yes; Corresponds to UL 508
RCM (formerly C-TICK)	Yes
KC approval	Yes
<b>Use in hazardous areas</b>	
<ul style="list-style-type: none"> <li>• FM Class I Division 2</li> </ul>	No
<b>Ambient conditions</b>	
<b>Ambient temperature during operation</b>	
<ul style="list-style-type: none"> <li>• min.</li> </ul>	0 °C
<ul style="list-style-type: none"> <li>• max.</li> </ul>	50 °C; Vertical installation (horizontal)
<b>Ambient temperature during storage/transportation</b>	
<ul style="list-style-type: none"> <li>• min.</li> </ul>	-20 °C
<ul style="list-style-type: none"> <li>• max.</li> </ul>	60 °C
<b>Relative humidity</b>	
<ul style="list-style-type: none"> <li>• Operation, max.</li> </ul>	95 %; no condensation
<b>Vibrations</b>	
<ul style="list-style-type: none"> <li>• Vibration load in operation</li> </ul>	10 m/s <sup>2</sup>
<ul style="list-style-type: none"> <li>• Vibration load during transport/storage</li> </ul>	10 m/s <sup>2</sup>
<b>Shock testing</b>	
<ul style="list-style-type: none"> <li>• Shock load during operation</li> </ul>	150 m/s <sup>2</sup>
<ul style="list-style-type: none"> <li>• shock acceleration during storage/transport</li> </ul>	150 m/s <sup>2</sup>
<b>Mechanics/material</b>	
Enclosure material (front) <ul style="list-style-type: none"> <li>• Aluminum</li> </ul>	Yes
<b>Dimensions</b>	
Width of the housing front	415 mm
Height of housing front	310 mm

Mounting cutout, width	396 mm; Tolerance: +1 mm
Mounting cutout, height	291 mm; Tolerance: +1 mm
Overall depth	62.5 mm
<b>Weights</b>	
Weight (without packaging)	3.9 kg
Weight (with packaging)	5 kg

**last modified:** 12/16/2020 