



power contactor, AC-3 12 A, 5.5 kW / 400 V 2 NO + 2 NC, 230 V AC, 50 Hz  
3-pole, Size S0 Spring-type terminal Removable auxiliary switch

|   |                                       |
|---|---------------------------------------|
| <b>product brand name</b>   | SIRIUS                                |
| <b>product designation</b>  | Power contactor                       |
| <b>product type designation</b>   | 3RT2                                  |
| <b>General technical data</b>   |                                       |
| <b>size of contactor</b>  | S0                                    |
| <b>product extension</b>  |                                       |
| <ul style="list-style-type: none"> <li>function module for communication</li> <li>auxiliary switch</li> </ul>   | No<br>No                              |
| <b>power loss [W] for rated value of the current at AC in hot operating state</b>   | 1.5 W                                 |
| <ul style="list-style-type: none"> <li>per pole</li> </ul>  | 0.5 W                                 |
| <b>power loss [W] for rated value of the current without load current share typical</b>   | 7.6 W                                 |
| <b>surge voltage resistance</b>   |                                       |
| <ul style="list-style-type: none"> <li>of main circuit rated value</li> <li>of auxiliary circuit rated value</li> </ul>   | 6 kV<br>6 kV                          |
| maximum permissible voltage for safe isolation between coil and main contacts acc. to EN 60947-1  | 400 V                                 |
| <b>shock resistance at rectangular impulse</b>  |                                       |
| <ul style="list-style-type: none"> <li>at AC</li> </ul>   | 7,5g / 5 ms, 4,7g / 10 ms             |
| <b>shock resistance with sine pulse</b>   |                                       |
| <ul style="list-style-type: none"> <li>at AC</li> </ul>   | 11,8g / 5 ms, 7,4g / 10 ms            |
| <b>mechanical service life (switching cycles)</b>   |                                       |
| <ul style="list-style-type: none"> <li>of contactor typical</li> <li>of the contactor with added electronically optimized auxiliary switch block typical</li> <li>of the contactor with added auxiliary switch block typical</li> </ul> | 10 000 000<br>5 000 000<br>10 000 000 |
| <b>reference code acc. to IEC 81346-2</b>   | Q                                     |
| Substance Prohibitance (Date)   | 01.10.2009 00:00:00                   |
| <b>Ambient conditions</b>   |                                       |
| installation altitude at height above sea level maximum   | 2 000 m                               |
| <b>ambient temperature</b>  |                                       |
| <ul style="list-style-type: none"> <li>during operation</li> <li>during storage</li> </ul>  | -25 ... +60 °C<br>-55 ... +80 °C      |
| <b>Main circuit</b>   |                                       |
| <b>number of poles for main current circuit</b>   | 3                                     |
| <b>number of NO contacts for main contacts</b>  | 3                                     |
| operating voltage at AC-3 rated value maximum   | 690 V                                 |

|  |   |
|--|---|
| <b>operational current</b>   |   |
| <ul style="list-style-type: none"> <li>● at AC-1 at 400 V at ambient temperature 40 °C rated value</li> </ul>  | 40 A                                    |
| <ul style="list-style-type: none"> <li>● at AC-1 <ul style="list-style-type: none"> <li>— up to 690 V at ambient temperature 40 °C rated value</li> <li>— up to 690 V at ambient temperature 60 °C rated value</li> </ul> </li> </ul>  | 40 A<br>35 A                            |
| <ul style="list-style-type: none"> <li>● at AC-3 <ul style="list-style-type: none"> <li>— at 400 V rated value</li> <li>— at 500 V rated value</li> <li>— at 690 V rated value</li> </ul> </li> </ul>  | 12 A<br>12 A<br>9 A                     |
| ● at AC-4 at 400 V rated value   | 12.5 A                                  |
| ● at AC-5a up to 690 V rated value   | 35.2 A                                  |
| ● at AC-5b up to 400 V rated value   | 9.9 A                                   |
| <ul style="list-style-type: none"> <li>● at AC-6a <ul style="list-style-type: none"> <li>— up to 230 V for current peak value n=20 rated value</li> <li>— up to 400 V for current peak value n=20 rated value</li> <li>— up to 500 V for current peak value n=20 rated value</li> <li>— up to 690 V for current peak value n=20 rated value</li> </ul> </li> </ul> | 11.4 A<br>11.4 A<br>11.3 A<br>9 A       |
| <ul style="list-style-type: none"> <li>● at AC-6a <ul style="list-style-type: none"> <li>— up to 230 V for current peak value n=30 rated value</li> <li>— up to 400 V for current peak value n=30 rated value</li> <li>— up to 500 V for current peak value n=30 rated value</li> <li>— up to 690 V for current peak value n=30 rated value</li> </ul> </li> </ul> | 7.6 A<br>7.6 A<br>7.6 A<br>7.6 A        |
| minimum cross-section in main circuit at maximum AC-1 rated value  | 10 mm <sup>2</sup>                      |
| <b>operational current for approx. 200000 operating cycles at AC-4</b>   |   |
| <ul style="list-style-type: none"> <li>● at 400 V rated value</li> <li>● at 690 V rated value</li> </ul>   | 5.5 A<br>5.5 A                          |
| <b>operational current</b>   |   |
| <ul style="list-style-type: none"> <li>● at 1 current path at DC-1 <ul style="list-style-type: none"> <li>— at 24 V rated value</li> <li>— at 110 V rated value</li> <li>— at 220 V rated value</li> <li>— at 440 V rated value</li> <li>— at 600 V rated value</li> </ul> </li> </ul>   | 35 A<br>4.5 A<br>1 A<br>0.4 A<br>0.25 A |
| <ul style="list-style-type: none"> <li>● with 2 current paths in series at DC-1 <ul style="list-style-type: none"> <li>— at 24 V rated value</li> <li>— at 110 V rated value</li> <li>— at 220 V rated value</li> <li>— at 440 V rated value</li> <li>— at 600 V rated value</li> </ul> </li> </ul>  | 35 A<br>35 A<br>5 A<br>1 A<br>0.8 A     |
| <ul style="list-style-type: none"> <li>● with 3 current paths in series at DC-1 <ul style="list-style-type: none"> <li>— at 24 V rated value</li> <li>— at 110 V rated value</li> <li>— at 220 V rated value</li> <li>— at 440 V rated value</li> <li>— at 600 V rated value</li> </ul> </li> </ul>  | 35 A<br>35 A<br>35 A<br>2.9 A<br>1.4 A  |
| <b>operational current</b>   |   |
| <ul style="list-style-type: none"> <li>● at 1 current path at DC-3 at DC-5 <ul style="list-style-type: none"> <li>— at 24 V rated value</li> </ul> </li> </ul>   | 20 A                                    |

|  |   |
|--|---|
| <ul style="list-style-type: none"> <li>— at 110 V rated value</li> <li>— at 220 V rated value</li> <li>— at 440 V rated value</li> <li>— at 600 V rated value</li> <li>● with 2 current paths in series at DC-3 at DC-5 <ul style="list-style-type: none"> <li>— at 24 V rated value</li> <li>— at 110 V rated value</li> <li>— at 220 V rated value</li> <li>— at 440 V rated value</li> <li>— at 600 V rated value</li> </ul> </li> <li>● with 3 current paths in series at DC-3 at DC-5 <ul style="list-style-type: none"> <li>— at 24 V rated value</li> <li>— at 110 V rated value</li> <li>— at 220 V rated value</li> <li>— at 440 V rated value</li> <li>— at 600 V rated value</li> </ul> </li> </ul> | <p>2.5 A</p> <p>1 A</p> <p>0.09 A</p> <p>0.06 A</p> <p>35 A</p> <p>15 A</p> <p>3 A</p> <p>0.27 A</p> <p>0.16 A</p> <p>35 A</p> <p>35 A</p> <p>10 A</p> <p>0.6 A</p> <p>0.6 A</p>  |
| <p><b>operating power</b></p> <ul style="list-style-type: none"> <li>● at AC-3 <ul style="list-style-type: none"> <li>— at 230 V rated value</li> <li>— at 400 V rated value</li> <li>— at 500 V rated value</li> <li>— at 690 V rated value</li> </ul> </li> </ul>  | <p>3 kW</p> <p>5.5 kW</p> <p>5.5 kW</p> <p>7.5 kW</p>   |
| <p><b>operating power for approx. 200000 operating cycles at AC-4</b></p> <ul style="list-style-type: none"> <li>● at 400 V rated value</li> <li>● at 690 V rated value</li> </ul>   | <p>2.6 kW</p> <p>4.6 kW</p>   |
| <p><b>operating apparent power at AC-6a</b></p> <ul style="list-style-type: none"> <li>● up to 230 V for current peak value n=20 rated value</li> <li>● up to 400 V for current peak value n=20 rated value</li> <li>● up to 500 V for current peak value n=20 rated value</li> <li>● up to 690 V for current peak value n=20 rated value</li> </ul>   | <p>4.5 kV·A</p> <p>7.8 kV·A</p> <p>9.8 kV·A</p> <p>10.7 kV·A</p>  |
| <p><b>operating apparent power at AC-6a</b></p> <ul style="list-style-type: none"> <li>● up to 230 V for current peak value n=30 rated value</li> <li>● up to 400 V for current peak value n=30 rated value</li> <li>● up to 500 V for current peak value n=30 rated value</li> <li>● up to 690 V for current peak value n=30 rated value</li> </ul>   | <p>3 kV·A</p> <p>5.2 kV·A</p> <p>6.5 kV·A</p> <p>9 kV·A</p>   |
| <p><b>short-time withstand current in cold operating state up to 40 °C</b></p> <ul style="list-style-type: none"> <li>● limited to 1 s switching at zero current maximum</li> <li>● limited to 5 s switching at zero current maximum</li> <li>● limited to 10 s switching at zero current maximum</li> <li>● limited to 30 s switching at zero current maximum</li> <li>● limited to 60 s switching at zero current maximum</li> </ul>   | <p>210 A; Use minimum cross-section acc. to AC-1 rated value</p> <p>210 A; Use minimum cross-section acc. to AC-1 rated value</p> <p>162 A; Use minimum cross-section acc. to AC-1 rated value</p> <p>103 A; Use minimum cross-section acc. to AC-1 rated value</p> <p>88 A; Use minimum cross-section acc. to AC-1 rated value</p> |
| <p><b>no-load switching frequency</b></p> <ul style="list-style-type: none"> <li>● at AC</li> </ul>  | <p>5 000 1/h</p>  |
| <p><b>operating frequency</b></p> <ul style="list-style-type: none"> <li>● at AC-1 maximum</li> <li>● at AC-2 maximum</li> <li>● at AC-3 maximum</li> <li>● at AC-4 maximum</li> </ul>   | <p>1 000 1/h</p> <p>1 000 1/h</p> <p>1 000 1/h</p> <p>300 1/h</p>   |
| <b>Control circuit/ Control</b>  |   |
| <p><b>type of voltage of the control supply voltage</b></p>  | <p>AC</p>   |
| <p><b>control supply voltage at AC</b></p> <ul style="list-style-type: none"> <li>● at 50 Hz rated value</li> </ul>  | <p>230 V</p>  |
| <p><b>operating range factor control supply voltage rated value of magnet coil at AC</b></p> <ul style="list-style-type: none"> <li>● at 50 Hz</li> </ul>  | <p>0.8 ... 1.1</p>  |
| <p><b>apparent pick-up power of magnet coil at AC</b></p> <ul style="list-style-type: none"> <li>● at 50 Hz</li> </ul>   | <p>65 V·A</p>   |

|   |   |
|---|---|
| <b>inductive power factor with closing power of the coil</b><br>• at 50 Hz  | 0.82  |
| <b>apparent holding power of magnet coil at AC</b><br>• at 50 Hz  | 7.6 V·A   |
| <b>inductive power factor with the holding power of the coil</b><br>• at 50 Hz  | 0.25  |
| <b>closing delay</b><br>• at AC   | 8 ... 40 ms   |
| <b>opening delay</b><br>• at AC   | 4 ... 16 ms   |
| <b>arcing time</b>  | 10 ... 10 ms  |
| <b>control version of the switch operating mechanism</b>  | Standard A1 - A2  |
| <b>Auxiliary circuit</b>  |   |
| number of NC contacts for auxiliary contacts<br>instantaneous contact   | 2   |
| number of NO contacts for auxiliary contacts<br>instantaneous contact   | 2   |
| operational current at AC-12 maximum  | 10 A  |
| <b>operational current at AC-15</b><br>• at 230 V rated value<br>• at 400 V rated value<br>• at 500 V rated value<br>• at 690 V rated value   | 6 A<br>3 A<br>2 A<br>1 A  |
| <b>operational current at DC-12</b><br>• at 24 V rated value<br>• at 48 V rated value<br>• at 60 V rated value<br>• at 110 V rated value<br>• at 125 V rated value<br>• at 220 V rated value<br>• at 600 V rated value  | 10 A<br>6 A<br>6 A<br>3 A<br>2 A<br>1 A<br>0.15 A                 |
| <b>operational current at DC-13</b><br>• at 24 V rated value<br>• at 48 V rated value<br>• at 60 V rated value<br>• at 110 V rated value<br>• at 125 V rated value<br>• at 220 V rated value<br>• at 600 V rated value  | 6 A<br>2 A<br>2 A<br>1 A<br>0.9 A<br>0.3 A<br>0.1 A               |
| <b>contact reliability of auxiliary contacts</b>  | 1 faulty switching per 100 million (17 V, 1 mA)                   |
| <b>UL/CSA ratings</b>   |   |
| <b>full-load current (FLA) for 3-phase AC motor</b><br>• at 480 V rated value<br>• at 600 V rated value   | 11 A<br>11 A  |
| <b>yielded mechanical performance [hp]</b><br>• for single-phase AC motor<br>— at 110/120 V rated value<br>— at 230 V rated value<br>• for 3-phase AC motor<br>— at 200/208 V rated value<br>— at 220/230 V rated value<br>— at 460/480 V rated value<br>— at 575/600 V rated value | 1 hp<br>2 hp<br>3 hp<br>3 hp<br>7.5 hp<br>10 hp                   |
| <b>contact rating of auxiliary contacts according to UL</b>   | A600 / Q600   |
| <b>Short-circuit protection</b>   |   |
| <b>design of the fuse link</b><br>• for short-circuit protection of the main circuit<br>— with type of coordination 1 required  | gG: 63A (690V,100kA), aM: 32A (690V,100kA), BS88: 63A (415V,80kA) |

- with type of assignment 2 required
- for short-circuit protection of the auxiliary switch required

gG: 25A (690V,100kA), aM: 20A (690V,100kA), BS88: 25A (415V,80kA)  
gG: 10 A (500 V, 1 kA)

### Installation/ mounting/ dimensions

|                              |  |
|------------------------------|--|
| <b>mounting position</b>     | +/-180° rotation possible on vertical mounting surface; can be tilted forward and backward by +/- 22.5° on vertical mounting surface |
| <b>fastening method</b>      | screw and snap-on mounting onto 35 mm standard mounting rail according to DIN EN 60715   |
| ● side-by-side mounting      | Yes  |
| <b>height</b>                | 102 mm   |
| <b>width</b>                 | 45 mm  |
| <b>depth</b>                 | 144 mm   |
| <b>required spacing</b>      |  |
| ● with side-by-side mounting |  |
| — forwards                   | 10 mm  |
| — upwards                    | 10 mm  |
| — downwards                  | 10 mm  |
| — at the side                | 0 mm   |
| ● for grounded parts         |  |
| — forwards                   | 10 mm  |
| — upwards                    | 10 mm  |
| — at the side                | 6 mm   |
| — downwards                  | 10 mm  |
| ● for live parts             |  |
| — forwards                   | 10 mm  |
| — upwards                    | 10 mm  |
| — downwards                  | 10 mm  |
| — at the side                | 6 mm   |

### Connections/ Terminals

|   |                                   |
|---|-----------------------------------|
| <b>type of electrical connection</b>                              |                                   |
| ● for main current circuit  | spring-loaded terminals           |
| ● for auxiliary and control circuit                               | spring-loaded terminals           |
| ● at contactor for auxiliary contacts                             | Spring-type terminals             |
| ● of magnet coil  | Spring-type terminals             |
| <b>type of connectable conductor cross-sections</b>               |                                   |
| ● for main contacts   |                                   |
| — solid   | 2x (1 ... 10 mm <sup>2</sup> )    |
| — solid or stranded   | 2x (1 ... 10 mm <sup>2</sup> )    |
| — finely stranded with core end processing                        | 2x (1 ... 6 mm <sup>2</sup> )     |
| — finely stranded without core end processing                     | 2x (1 ... 6 mm <sup>2</sup> )     |
| ● at AWG cables for main contacts                                 | 2x (18 ... 8)                     |
| <b>connectable conductor cross-section for main contacts</b>      |                                   |
| ● solid   | 1 ... 10 mm <sup>2</sup>          |
| ● stranded  | 1 ... 10 mm <sup>2</sup>          |
| ● finely stranded with core end processing                        | 1 ... 6 mm <sup>2</sup>           |
| ● finely stranded without core end processing                     | 1 ... 6 mm <sup>2</sup>           |
| <b>connectable conductor cross-section for auxiliary contacts</b> |                                   |
| ● solid or stranded   | 0.5 ... 2.5 mm <sup>2</sup>       |
| ● finely stranded with core end processing                        | 0.5 ... 1.5 mm <sup>2</sup>       |
| ● finely stranded without core end processing                     | 0.5 ... 2.5 mm <sup>2</sup>       |
| <b>type of connectable conductor cross-sections</b>               |                                   |
| ● for auxiliary contacts  |                                   |
| — solid or stranded   | 2x (0.5 ... 2.5 mm <sup>2</sup> ) |
| — finely stranded with core end processing                        | 2x (0.5 ... 1.5 mm <sup>2</sup> ) |
| — finely stranded without core end processing                     | 2x (0.5 ... 2.5 mm <sup>2</sup> ) |
| ● at AWG cables for auxiliary contacts                            | 2x (20 ... 14)                    |
| <b>AWG number as coded connectable conductor cross</b>            |                                   |

|   |  |
|---|--|
| <b>section</b>  |  |
| <ul style="list-style-type: none"> <li>for main contacts</li> <li>for auxiliary contacts</li> </ul>                                     | 18 ... 8<br>20 ... 14                            |
| <b>Safety related data</b>  |  |
| product function mirror contact acc. to IEC 60947-4-1   | Yes  |
| B10 value with high demand rate acc. to SN 31920  | 450 000  |
| <b>proportion of dangerous failures</b>   |  |
| <ul style="list-style-type: none"> <li>with low demand rate acc. to SN 31920</li> <li>with high demand rate acc. to SN 31920</li> </ul> | 40 %<br>73 %                                     |
| failure rate [FIT] with low demand rate acc. to SN 31920  | 100 FIT  |
| product function positively driven operation acc. to IEC 60947-5-1  | No   |
| T1 value for proof test interval or service life acc. to IEC 61508  | 20 y   |
| protection class IP on the front acc. to IEC 60529  | IP20   |
| touch protection on the front acc. to IEC 60529   | finger-safe, for vertical contact from the front |
| <b>suitability for use</b>  |  |
| <ul style="list-style-type: none"> <li>safety-related switching OFF</li> </ul>  | Yes  |

|                                |     |
|--------------------------------|-----|
| <b>Certificates/ approvals</b> |     |
| General Product Approval       | EMC |



[KC](#)



|                                       |                           |                   |                   |
|---------------------------------------|---------------------------|-------------------|-------------------|
| Functional Safety/Safety of Machinery | Declaration of Conformity | Test Certificates | Marine / Shipping |
|---------------------------------------|---------------------------|-------------------|-------------------|

[Type Examination Certificate](#)

[UK Declaration of Conformity](#)



EG-Konf.

[Type Test Certificates/Test Report](#)

[Special Test Certificate](#)



**Marine / Shipping**



**other**

[Confirmation](#)



[Confirmation](#)

**Further information**

Information- and Downloadcenter (Catalogs, Brochures,...)

<https://www.siemens.com/ic10>

Industry Mall (Online ordering system)

<https://mall.industry.siemens.com/mall/en/en/Catalog/product?mlfb=3RT2024-2AP04>

Cax online generator

<http://support.automation.siemens.com/WW/CAXorder/default.aspx?lang=en&mlfb=3RT2024-2AP04>

Service&Support (Manuals, Certificates, Characteristics, FAQs,...)

<https://support.industry.siemens.com/cs/ww/en/ps/3RT2024-2AP04>

Image database (product images, 2D dimension drawings, 3D models, device circuit diagrams, EPLAN macros, ...)

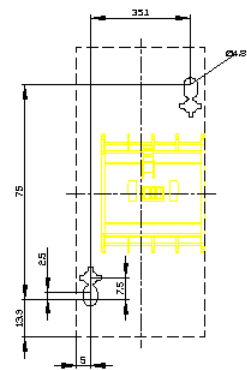
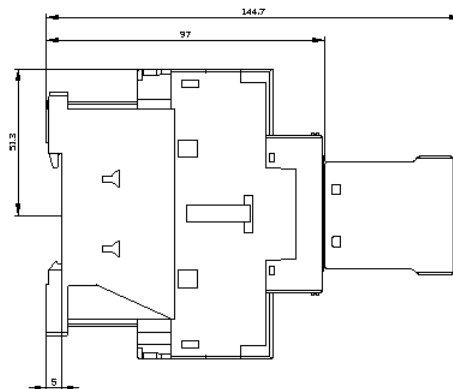
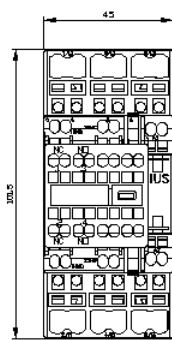
[http://www.automation.siemens.com/bilddb/cax\\_de.aspx?mlfb=3RT2024-2AP04&lang=en](http://www.automation.siemens.com/bilddb/cax_de.aspx?mlfb=3RT2024-2AP04&lang=en)

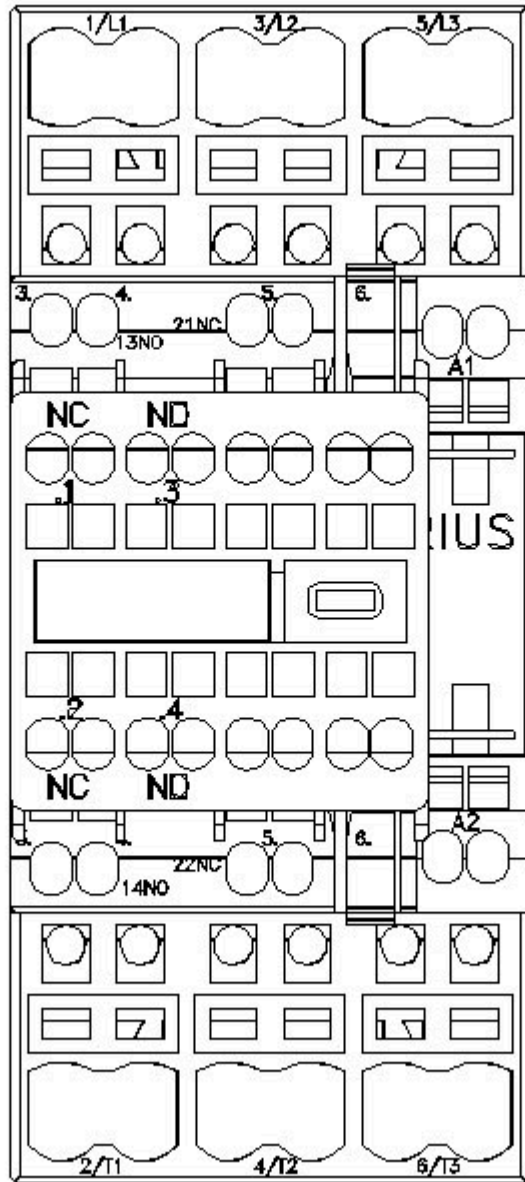
Characteristic: Tripping characteristics, I<sup>t</sup>, Let-through current

<https://support.industry.siemens.com/cs/ww/en/ps/3RT2024-2AP04/char>

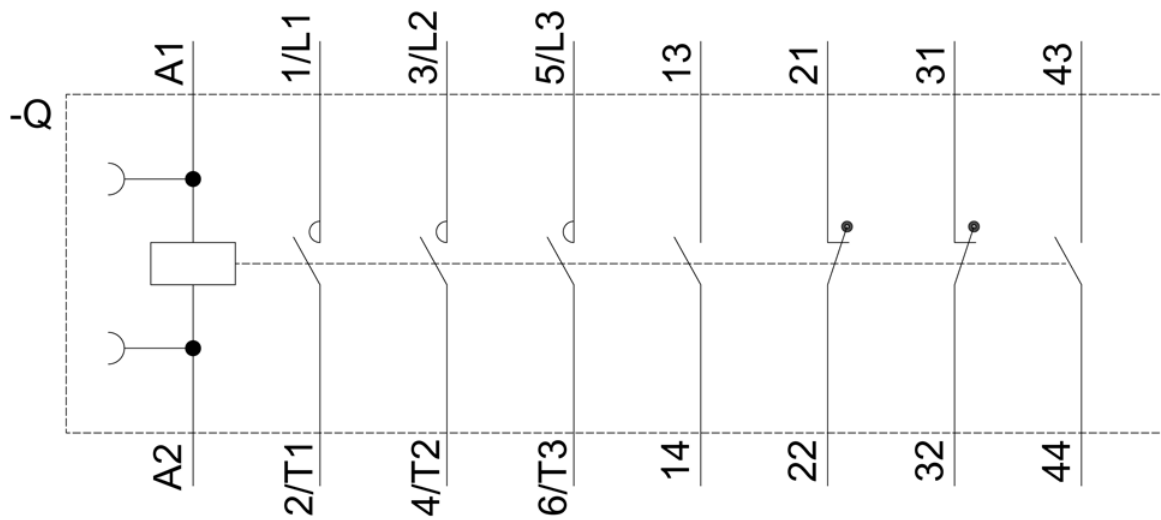
Further characteristics (e.g. electrical endurance, switching frequency)

<http://www.automation.siemens.com/bilddb/index.aspx?view=Search&mlfb=3RT2024-2AP04&objecttype=14&gridview=view1>









last modified:

7/2/2021 